

# NANCY



## Tours and short breaks Groups 2019

  
Organisation  
des Nations Unies  
pour l'éducation,  
la science et la culture

  
Places Stanislas, de la Carrière  
et d'Alliance à Nancy  
inscrites sur la Liste du patrimoine  
mondial en 1983

DESTINATION  
  
OFFICE DE TOURISME



Getting here and getting around	3
Nancy highlights	4
Guided tours	5
Guided tours and prices	6
Other ways to visit Nancy	7
Museums	8
The Greater Nancy Metropolitan Area	9
Prices and tour information	10/15
Nancy and the local area	16/17
School trips and tours for young people	18
Useful information	19

## OUR SERVICE IN CHARGE OF GROUPS

*Destination Nancy - Office de tourisme provides you professionalism as well as knowledge of the cultural heritage and offers you in this guide a selection of visits and stays throughout the year. Through a simple request, the service is ready to organize, this as quickly as possible, the programs of your choice with accommodation, visits and transfers.*

## For your reservations please contact

**Annabelle HAEBIG** and **Alexandre LEGARE-GADREAU**  
**Tel.:** +33 (0)3 83 35 90 02

**E-mail:** [reservations@destination-nancy.com](mailto:reservations@destination-nancy.com)

Feel free to visit our website [www.nancy-tourisme.fr](http://www.nancy-tourisme.fr). more particularly the section "groups" to discover our new offers:  
<http://en.nancy-tourisme.fr/groups/>



## AND STILL MORE!

### A dedicated service for personalized offers

- ▶ An answer to your request within a maximum of 72 hours
- ▶ Additional services and available documents
- ▶ Label Tourism and Disability\*
- ▶ Guided visits available in numerous languages

### Caption of the guided tours

- Duration
- On foot
- By bus

\*Destination Nancy -Office de tourisme has the label Tourism and Disability and consequently offers adapted tours.



### Arriving by coach

#### Motorways

Coming from Paris or Strasbourg

- ▶ **the A4 motorway**

Coming from Brussels, Luxembourg, Metz or Dijon

- ▶ **via the A31 motorway**

Road maps showing traffic flow and coach parks, available to download from the business section "Groups" at:  
<http://de.nancy-tourisme.fr/gruppen/>

### Arriving by train

#### Main lines

**Paris-Nancy:** 1hr 30mins on the TGV / **Strasbourg-Nancy:** 1hr 15mins / **Luxemburg-Nancy:** 1hr 30mins / **Dijon-Nancy:** 2hrs 30mins / **Lyon-Nancy:** 4hrs

#### Nancy Central Train Station

3, place Thiers

**Tel.:** +33 (0)8 36 35 35 35

#### Connections to the main French cities from the Lorraine TGV station

**Lille** (2hrs 5mins), **Nantes** (3hrs 55mins), **Rennes** (3hrs 55mins), **Bordeaux** (5hrs 10mins), **Marne-la-Vallée TGV** (1hr 10mins), **Massy TGV** (1hr 45mins)

#### Shuttles from the Lorraine TGV station to Nancy Centre

#### Lorraine TGV SNCF Station

(38km from Nancy)

Route départementale 910

57420 LOUVIGNY

[www.voyages-sncf.com](http://www.voyages-sncf.com)

### Arriving by plane

#### Metz Nancy Lorraine Airport

(45km from Nancy)

57420 GOIN

**Tel.:** +33 (0)3 87 56 70 00

[www.lorraineairport.com](http://www.lorraineairport.com)

Numerous shuttles run between the airport and Nancy (time-tables can be found on the airport's website)

## Getting around town

### Tram and buses

The city's transport system is made up of 32 tram and bus lines. There are 'park and ride' facilities on the outskirts of the city. It is advisable to buy your transport passes before arrival; the group pass is particularly suitable for groups of 10 people or more. Orders must be made at least 48 hours prior to arrival.

**Bookings:** Allostan +33 (0)3 83 30 08 08

[www.reseau-stan.com](http://www.reseau-stan.com)

### Go by bike

#### Vélo Stan Lib'

For short journeys, free access to bikes is available 24 hours a day, 7 days a week, from 29 stations which are very well distributed around Nancy and Greater Nancy..

[www.velostanlib.fr](http://www.velostanlib.fr)

#### Vélo Stan Boutic'

For longer journeys, it is possible to hire bikes for periods ranging from half a day to a whole year.

8 bike rental points are distributed around Nancy and Greater Nancy.

[www.grand-nancy.org/velostanboutic](http://www.grand-nancy.org/velostanboutic)

# Nancy, highlights

Former capital of the Dukes of Lorraine until its annexation to the French kingdom in the 18th century, the city of Nancy has only become more beautiful over the course of its three golden ages. Each one of these epochs has left Nancy with a wealth of prestigious heritage.

## Renaissance



The Ducal Palace and the distinctive hotels of the Old Town still bear witness to the splendour and power of the dukes' Renaissance courtyard.

## 18<sup>th</sup> Century



Place Stanislas is the crown jewel of a remarkable architectural ensemble which has been listed as a UNESCO World Heritage site since 1983.

## The 1900s and Art Nouveau



Nancy was also one of the main European centres of Art Nouveau thanks to some artists of international renown who were at the heart of the École de Nancy; Emile Gallé's glasswork, Louis Majorelle's furniture and the celebrated Daum collection, along with numerous buildings with plant-based designs, together form an exceptional and unique heritage..

## Major annual events

### Spring

**9 November 2018 – 24 February 2019**

**“Exhibition Opera! The arts in Nancy over three centuries”**

Galerie Poirel

This exhibition, staged to coincide with the 100th anniversary of the opening of Nancy Opera House on 14 October 1919, looks back at 310 years of the arts in the city.

**26 January – 24 March 2019**

**“Magnetica exhibition”**

Iron History Museum

A touring exhibition on magnetism.

### Summer

**Mid-June to mid-September 2019**

**„Rendez-vous place Stanislas“**

Enter a grandiose "light dream": a video projection show in Place Stanislas

**July-August 2019**

**„Festival Nancyphonies“**

The leading classical music festival in the Grand Est region

**End August to the beginning of September 2019**

**“Nancy Lorraine International Film Festival”**

Discover a different type of cinema, open to new discoveries and diversity

### Autumn

**Beginning of September 2019**

**“Le Livre sur la Place”**

The first major book fair of the French literary season

**October 2019**

**“Ephemeral Garden”**

When nature dialogues with the remarkable heritage of Place Stanislas

**October 2019**

**“Festival Nancy Jazz Pulsations”**

The most iconic music festival in the Grand Est region

### Winter

**late November 2019 - early January 2019**

**“The Saint Nicolas celebrations”**

**7 & 8 December 2019**

**“The Big Saint Nicolas weekend”**  
Procession through the city on 7 December, cultural and shopping events, music, illuminations, rides and a big wheel, Saint Nicolas Christmas markets, etc. 40 days of celebration in Nancy start in late November, with the big launch weekend 7 - 8 December, and run until mid-January.

## No.1 Historic City Centre



**1hr 30mins. Sign language interpreter also available**

This tour notably includes Place Stanislas and Place de la Carrière and allows the visitor to examine the lasting impression the last Duke of Lorraine made on the city. The charm of the town – Medieval and Renaissance – is revealed thanks not only to its architectural gems, but also to its great shops, pretty terraces and little cafés. The Ducal Palace, the distinctive hotels, the Craffe Gate and the Saint Epvre church are some important monuments from Lorraine's history.

**Option of 30 additional mins. Tour of the inside of the Craffe Gate built in the 14th century, it is one of the last, still-standing remnants from the medieval wall which protected Nancy at the time. It also served as a prison. 18 people max. per group**

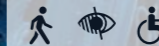
## No.2 UNESCO World Heritage



**1hr 30mins. Sign language interpreter also available**

Nancy is celebrated all over the world for its architectural ensemble which, since 1983, has been listed as a UNESCO World Heritage site. You will discover Place Stanislas, completely renovated, decorated and pedestrianized and considered as one of the most beautiful squares in the world, as well as Place d'Alliance and Place de la Carrière.

## No.3 Art Nouveau: at the heart of business



**1hr 30mins. Sign language interpreter also available**

From Place Maginot to Place Stanislas, this tour explores the sites which made up the business world around the year 1900: shops, banks and other buildings. The École de Nancy has successfully taken advantage of the progress in technology and the beauty of the decorative arts and crafts, so as to be able to engrave on stone, metal, glass and wood the entrepreneurial spirit which characterised the then bourgeoisie of business.

**Option of 30 additional mins. Tour of the interior of the Chamber of Commerce and Industry, week days only (Gruber stained glass window)**

# Guided tours

Prices for the provision of a guide can be found on page 6

## No.4 Art Nouveau in the Suburbs



**1hr 30mins.**

From your coach and with commentary from a guide you will discover the most remarkable École de Nancy buildings: Bergeret House, Saurupt Park (garden city composed of five more Art Nouveau villas) and some symbolic places such as Emile Gallé's former workshops.

**Option of 30 additional mins. Tour of the interior of Maison Bergeret, week days only**

## No.5 Art Nouveau Houses



**1hr 30mins.**

assistance for the hearing-impaired available (additional sign-language interpretation)

From the station to the city's western suburbs, the walk ends at the Ecole de Nancy Museum. Discover how the city progressively expanded, incorporating agricultural plots and old villages.

## No.6 Art nouveau? Art déco?



**1hr 30mins.**

assistance for the hearing-impaired available (additional sign-language interpretation)

While Nancy is internationally renowned as the capital of France's Art Nouveau, its Art Déco heritage is less well known. Nancy's Saurupt Park, an area that developed essentially between the wars, is the ideal place to gain an understanding of the difference between these two styles.

## Guided tours and prices

### No. 7 Taster Tour



**Duration:** 1 hr 30 assistance for the hearing-impaired available (additional sign-language interpretation)  
**Pricing:** From € 27 per person Sunday, also available in other languages (additional charge) - Based on 20-25 people.  
 This tour combines discovering the city's heritage with enjoying some of its culinary specialities, and includes a tour of one particular district (the Old Town, the UNESCO heritage site, or an Art Nouveau district) and an unusual location not generally open to the public. The tour finishes with an apéritif. Tastings take place in collaboration with local partners who will introduce their specialities, all reflecting Lorraine's regional cuisine.

### N°8 Street art



1h30  
 Street art created by artists from the local area and across the world stretches from Porte de la Craffe to Place des Vosges and from Place Simone Veil to Porte Sainte-Catherine, creating paths through space and time. This urban heritage, to which stunning works are continually added, opens up new perspectives and narratives. Look out for it all around Nancy!

### Prices and tour information 2019

We offer tours in French, English, German, Dutch, Japanese, Italian, Polish, Chinese and Russian. The following prices correspond to the cost of providing a guide (they do not include the admission fees to museums and sites which charge for entry) for:

- ▶ **The not-to-be-missed guided tours,**
- ▶ **The museum tours**

These prices do not apply to certain museums which have their own guides: Villa Majorelle, Maison Schott, Château de Fléville, Château de Montaigu, Douëra, (commentary in the coach only), Museum-Aquarium, History of Iron Museum and the Botanical Gardens Jean-Marie Pelt (more information on request).

**Walking tours and museum tours:** 1 guide per 25 people

**Coach tour:** 1 guide per coach

**Prices valid from:** 01.01.2019 au 31.12.2019

**2019 public holidays:** 01/01-22/04-01/05-08/05-30/05-10/06-14/07-15/08-01/11-11/11-25/12

### Table of Guided Tours of Nancy 2019 \*

#### IN FRENCH

Duration	Weekday	Sundays	Public holidays and after 9pm
1 h 30	106,00€	147,00€	212,00€
2 h 00	120,00€	177,00€	240,00€
3 h 00	164,00€	244,50€	328,00€
4 h 00	210,00€	294,00€	420,00€

#### IN OTHER LANGUAGES

Duration	Weekday	Sundays	Public holidays and after 9pm
1 h 30	130,00€	195,00€	260,00€
2 h 00	164,00€	246,00€	328,00€
3 h 00	210,00€	315,00€	420,00€
4 h 00	270,00€	405,00€	540,00€

#### \*Rates incl. tax:

- See our general terms and conditions of sale

- Registered with the Register of Tour and Holiday Operators in France with the number IM054190001

Destination Nancy - Office de tourisme can also offer guided tours on a range of themes: Nancy's botanical traditions, animals in the city, Nancy's street names, 18th century churches, little-known secrets of the market hall, and more.

For reservations, please contact us +33 (0)3 83 35 90 02 [reservations@destination-nancy.com](mailto:reservations@destination-nancy.com)

## Other ways to visit Nancy

### Treasure Hunts



**Duration:** 2 hrs 30 On foot Physical handicap or hearing-impaired  
**Price:** from €15 per person (if less than 20 people, a flat-rate of €300 will apply)  
 On Sunday available at additional charge - Based on 20 people minimum

#### Choice of 2 themes:

- ▶ Historic City Centre
- ▶ Art Nouveau

Take the time to discover - or rediscover - the city from a different angle. The route is punctuated by information and questions about the city, its history and its major historical figures. Competing in small groups, the goal is to answer the questions to get the highest score! With prizes awaiting the winning team this is a great activity for families, between friends or with your workmates, designed both for fun and to help you discover every facet of the City's history.

### Batt Chocolats



#### Démonstrations and tasting.

Discover stage by stage how Lorraine's star products and Batt's own specialities are made. Favourites include Nancy Macarons, Nancy Bergamotes (PGI), marzipan-covered Mirabelle plums, Lorraine Chardons and Marquises. Various chocolate figures are also produced at key times of year (Christmas, Easter, Valentine's Day, etc.).

**Duration:** 90 minutes

**Price Monday to Friday:** €6 per person (20 to 60 people)\*

**Price Saturday:** €12 per person with 1 dozen macarons (30 to 60 people)

[www.alainbatt.com](http://www.alainbatt.com)

**Tel.:** +33 3 83 35 70 00

\*Comment in French. Translation in English at additional charge

For reservations, please contact us +33 (0)3 83 35 90 02 [reservations@destination-nancy.com](mailto:reservations@destination-nancy.com)

### The Little Train



**Explore the historic city centre on a little train:** 18th-century architecture and the old town.

Art Nouveau route available on request

**March (Easter onwards)/ April:** 11am - 5pm

**May/ June/ July/ August/ September:** 10am - 6pm

**October:** 11am - 5pm

(hourly departures hour at set times, except 1pm)

**Duration:** 45 mins Booking required.

**Pricing:** €6 per person

15 people minimum, one free with every 20 persons paying

[www.petit-train-nancy.fr](http://www.petit-train-nancy.fr)

**Tel.:** +33 (0)3 89 73 74 24

### La Bergamote Boat



#### Guided canal tours

lunch or dinner cruises.

Boat moored at Sainte Catherine Port near the coach park and Place Stanislas.

**Duration:** 1 hr or 2 hrs 45, depending on tour.

**Price for 1 hr trip:** €12 per person (from 20 - 80 people)

Prices for lunches or dinners available on request.

[www.labergamote.fr](http://www.labergamote.fr)

**Tel.:** +33 6 08 22 70 16

# Museums

**Top tip**  
entry to the museums is free on the first Sunday of every month

## Guides from the museums

Call the museums directly on the numbers shown

### Guides from the tourist office

See price list p 6

#### Fine Arts Museum



**Recommended tour time:** 1hr 30mins – Closed on Tuesdays  
Next to paintings signed by Tintoret, Caravage, Rubens, Delacroix, Monet, Modigliani, and Picasso, works by a number of artists from Lorraine are displayed: Claude le Lorrain, Émile Friant, Victor Prouvé, Étienne Cournauld and Jules Bastien-Lepage. The Daum collection of glasswork is exhibited there and allows the visitor to discover 100 years of production of the celebrated Nancy manufacturer. A permanent space is also dedicated to the work of Jean Prouvé.

#### École de Nancy Museum



**Recommended tour time:** 1hr 30mins – Closed on Mondays and Tuesdays  
Situated on the property of Eugène Corbin, patron of the École de Nancy, the museum and its gardens recreate the decorative and botanical styles of the era. The collections (unique pieces by Émile Gallé, Eugène Vallin and Louis Majorelle) are testament to the diversity of techniques (furniture, glass “objets d’art”, stained-glass, leather, ceramics, textiles...) developed by the artists of this movement.

#### The Poirel Gallery



**During exhibitions, Tuesday to Friday:** 1pm – 5pm  
**Saturday and Sunday:** 2pm – 6pm  
The Poirel Gallery is entirely dedicated to contemporary art and design. On the façade and in the forecourt (dating from 1880), the permanent exhibit “Traits d’union” (“Hyphens”), by designer Robert Stadler, creates a dialogue between contemporary art, design and heritage.

#### The Nancy Museum Aquarium



**Recommended tour time:** 1h 30mins – Closed on Mondays  
The Nancy Museum Aquarium is home to an impressive collection of wildlife, from mounted animals representing global diversity and changing aquatic species in tropical aquariums. A variety of temporary themed exhibitions are regularly scheduled.  
**Tel.:** +33 (0)3 83 32 99 97  
**E-Mail:** [departement-public-MAN@grand-nancy.org](mailto:departement-public-MAN@grand-nancy.org)

#### History of Iron Museum



**Recommended tour time:** 2hrs – Closed on Tuesdays  
Against the backdrop of its own glass and iron architecture, the museum shows the evolution of iron production. The 300 m2 exhibition on the ground floor, in place since 2012, is dedicated to the models, sketches, plans and furniture of Jean Prouvé and includes several scale models of his works in the “structures garden”. Visitors can follow a suggested itinerary focusing on 12 iconic objects, the “Parcours d’En fer” (“Iron’s infernal journey”), and an Eiffel Tower exhibition is showing from late February 2018.  
**Tel.:** +33 (0)3 54 50 21 81  
**E-Mail:** [public-mhf@grandnancy.eu](mailto:public-mhf@grandnancy.eu)

#### Botanical Gardens Jean-Marie Pelt



**Recommended tour time:** 1hr 30mins – No weekly closure  
Covering over 35 ha the park is home to more than 12,000 plants, ranging from common garden varieties to species from considerably further afield (an Alpine garden, arboretum, rose garden, medicinal plants, etc.) The 2,500 m2 of tropical glass houses contain carnivorous plants, giant Amazonian water lilies, endangered palm trees, etc.  
**Tel.:** +33 (0)3 83 41 47 47  
**E-Mail:** [pedagogiecbn@grand-nancy.org](mailto:pedagogiecbn@grand-nancy.org)

# The Greater Nancy Metropolitan Area

The Greater Nancy metropolitan area comprises 20 communes. Progressively drawn in as the town spread, the 19 communes surrounding the city centre each have their own history and aspect. Similarly, each boasts its own architectural or natural gems. From the hills to the north and west (offering panoramic views and old vineyards) to the rivers and fields of the Meurthe valley to the south-east of the city (with rural countryside, lovely walks and white-water adventure), the territory of the Nancy metropolitan area is truly multi-faceted. A wide vista that ranges from Butte Sainte-Geneviève to the north, to the grand Chartreuse de Bosserville in the south, via the châteaux of Villers and Vandoeuvre and out to the vineyards of Dommartemont and the green islands of Tomblaine. And don’t miss the woodland-fringed ancestral villages (the Haye Forest is the second-largest suburban forest in France), the hundreds of kilometres of green routes, and other paths and trails (not all maintained) for walking, admiring the flora and fauna, leisure and sport. A selection of just a few sites to be discovered:

#### The Douëra in Malzéville



**Recommended:** 1 hr 30 mins. – 30 people max.  
A small building in the Arabic style, this astonishing Moorish folly dating from the late 19th-century resembles a scaled-down palace straight from “A Thousand and One Nights”. Three rooms have listed status: the Persian Room on the 1st floor, the Workshop and the Diwan on the 2nd floor, along with the building’s eastern façade.  
2 rue du Lion d’Or, 54220 Malzéville  
**Tel.:** +33 (0)3 83 29 43 78 /+33 (0)3 83 29 92 30

#### Notre-Dame de Bonsecours Church



**Duration:** 1 hr  
**Prices:** see page 6  
**Closed to visits at weekends and during services - 30 people maximum**  
The church, built between 1738 and 1741 on the site of a chapel dedicated to the Virgin Mary, was architect Emmanuel Héré’s first piece of work. Stanislas chose this church as the location for his and his wife’s tombs because of the importance of the Virgin Mary in Polish Christian traditions.

#### Château de Montaigu and parkland



**Open only through reservation via the History of Iron Museum, and only for guided tours.**  
The Château de Montaigu, a listed Historical Monument, was once the country house of the collector Edouard Salin (1889-1970) and houses collections of works of art, furniture dating from the 18th to the early 20th century, decorative arts and archaeology that bear proud witness to the superb taste of this enlightened amateur. The parkland, with planting typical of 19th-century gardens, has free entry.  
History of Iron Museum – Avenue du Général de Gaulle, 54140 Jarville-la-Malgrange  
**Tel.:** + 33 (0)3 54 50 21 81  
**E-Mail:** [public-mhf@grandnancy.eu](mailto:public-mhf@grandnancy.eu)

#### Château de Fléville



**Recommended:** 1 hr – 20 to 40 people Maximum  
Open from April to November, reservation 15 days in advance is required for groups and school visits. The Château de Fléville showcases the style of the first Renaissance with the pure lines of the stately homes found along the Loire. This romantic park is listed and holds “Outstanding Garden” status. Château de Fléville, 54710 Fléville-devant-Nancy  
**Tel.:** +33 (0)3 83 25 64 71  
**E-Mail:** [mc.delambel@gmail.com](mailto:mc.delambel@gmail.com)

#### Préville Cemetery



**Recommended:** 90 minutes – 25 people maximum  
**Prices:** see page 6  
Many of the tombs are designed in the Romanesque Revival, Moorish Revival or Romano-Byzantine styles popular in the 19th century. Nancy was one of the birthplaces of the art nouveau style which features heavily at Préville Cemetery. Created in 1842, the cemetery is packed with history. As you wander among the rows of graves, you will be struck by the many epitaphs, the range of shapes and materials, and the light reflecting off of the stone and leaded glass.

# Days out and day trips

Mix and match day visits and breaks from our list of ideas!

## 1. Essential Nancy (1 day)



From €49 per person

### Tour includes:

- ▶ **Morning:** tour of the "Historic Centre" (page 5)
- ▶ **Lunch**
- ▶ **Afternoon:** choose from one of the "Art Nouveau" tours (page 5) and visit the Ecole de Nancy Museum (page 8)

## 2. Nancy in a weekend (2 days/1 night)



From €142 per person

### Day 1

- ▶ **Afternoon:** the "Historic Centre" tour (page 5) and visit to the Museum of Fine Arts (page 8)
- ▶ **Dinner at the hotel**
- ▶ **Night in a 3-star hotel**

### Day 2

- ▶ **Morning:** "Art Nouveau in the suburbs" tour (page 5) and visit to the Ecole de Nancy Museum (page 8)
- ▶ **Lunch**

Our prices, based on 20 people minimum, include: the guided tours and entry to the museums, the meal or meals mentioned excluding drinks, 1 overnight stay (where applicable) in a double room in a hotel (with breakfast), free chauffeur. Drinks are not included. Transport and tourist tax to be paid directly to the hotel on arrival. Extra: single room, guided tours on Sundays, public holidays and in languages other than French. Schedules are flexible according to opening days and times of the sites and museums.

## 3. Nancy Art Nouveau (2 days/1 night)



From €151 per person

### Day 1

- ▶ **Afternoon:** tour of "Art Nouveau: at the heart of business" (page 5) and visit the Daum collection at the Museum of Fine Arts (page 8)
- ▶ **Dinner at the hotel**
- ▶ **Night in a 3 star hotel**

### Day 2

- ▶ **Morning:** "Art Nouveau in the suburbs" tour (page 5) and visit to the Ecole de Nancy Museum (page 8)
- ▶ **Lunch**

## 4. Botanical Nancy (1 day)



From €44 per person

### Breathe in the fragrances of days gone by

- ▶ **Morning:** tour of the Historic City Centre (page 5) taking in Pepinière Park and the Godron Garden
- ▶ **Lunch**
- ▶ **Afternoon:** guided tour of the Jean-Marie Pelt Botanical Gardens (page 8) including the tropical greenhouses

## Event Tourism

### The Saint Nicolas celebrations

Marrying tradition and contemporary art, this major event - celebrated by the people of Lorraine every year - attracts tens of thousands of people to Nancy annually. Over 40 days events, illuminations, Saint Nicolas Christmas markets, food and craft stalls and children's attractions serve to celebrate both Lorraine's patron saint and the values of sharing and festivities. Each year, a different country is guest of honour. The high point of the celebrations is the procession through the streets of the city centre. In 2019, this will take place on Saturday 7 December

### 4. December weekend (excluding Saint Nicolas Weekend)



From €134 per person

### December weekend (excluding Saint Nicolas Weekend)

#### Day 1: Saturday

- ▶ **Afternoon:** tour of the "Historic Centre" (page 5)
- ▶ **Free time** at the end of the tour to enjoy the Saint Nicolas Christmas markets, the big wheel and the various activities (see schedule)
- ▶ **Dinner at the hotel**
- ▶ **Night in a 3-star hotel**

#### Day 2: Sunday

- ▶ **Morning:** "Art Nouveau in the suburbs" tour (page 5) and visit to the Ecole de Nancy Museum (page 8)
- ▶ **Lunch**
- ▶ **Free time** to enjoy the activities in the city (see schedule)

Our prices, based on 20 people minimum, include: the guided tours and entry to the museums, the meal or meals mentioned excluding drinks, 1 overnight stay (where applicable) in a double room in a hotel (with breakfast), free chauffeur. Drinks are not included. Transport and tourist tax to be paid directly to the hotel on arrival. Extra: single room, guided tours on Sundays, public holidays and in languages other than French. Schedules are flexible according to opening days and times of the sites and museums.

NB: at the time of publication of this document we did not have the precise timings for the different activities and performances, and consequently the schedule and meal times may vary.

# Days out and day trips

## Saint Nicolas Weekend



From €130 per person

### Day 2: Saturday 7 December 2019

- ▶ **Afternoon:** tour of the "Historic Centre" (page 5)
- ▶ **Free time** at the start of the visit to look round the Saint Nicolas Christmas markets and enjoy the activities in the city centre: music, theatre, and dance
- ▶ **The day ends** with a procession of floats and video screening in Place Stanislas
- ▶ **Dinner at the hotel**
- ▶ **Night in a 3-star hotel**

### Day 2: Sunday 8 December 2019

- ▶ **Morning:** visit the museum of your choice (page 8)
- ▶ **Lunch**
- ▶ **Free time** to look around the Saint Nicolas Christmas markets and enjoy the activities in the city centre: music, theatre, dance

## 6. Nancy in Summer (2 days / 1 night)



From €111 per person

### The stunning sights of Nancy

- ▶ **Dinner**
- ▶ **Evening:** tour of the Historic City Centre (page 5) and an introduction to Rendez-Vous Place Stanislas
- ▶ **Rendez-vous Place Stanislas sound-and-light show**
- ▶ **Bed and breakfast in a three-star hotel**

The concerts of the Nancyphonies festival in July and August are a great opportunity to hear the very best classical music performed in Nancy's most stunning venues, such as the City Hall's Grands Salons. The festival brings together experienced international artists and young rising stars.

- ▶ **+ a concert** during the Nancyphonies (see programme) including a tour of the City Hall's Grands Salons.  
**From €130.00 per person**
- ▶ **+ a concert** during the Nancyphonies (see programme) including a tour of the City Hall's Grands Salons and an additional guided tour (see pages 5, 6 and 8):  
**From €142.50 per person**

# Days out and day trips

## Food tourism

### Nancy Passion Sucrée



Did you know that Nancy boasts over 20 sweet specialities and an impressive number of patisseries and chocolate shops? During your visit, make sure you taste macarons, bergamots, babas and Saint-Epvre cake, madeleines, Florentines, Duchesses and Marquises, red candy figures and marshmallows, Lorraine Cake and Nancy Cake, plus all the different treats made from Mirabelle plums. And that's just the start of the list! These sweets, cakes and desserts are produced in the local area under the Nancy Passions Sucrées brand by local craftspeople recognised for their skills. They use traditional methods to make genuine local products to excellent standards of quality. A food tour is the perfect way to lift the lid on at least some of the city's incredible range of sweet specialities.

### 7. A taste of art nouveau



From €59 per person

A tasting of products from years gone by

- **Morning:** visit to the Ecole de Nancy Museum (page 8)
- **Lunch**
- **Afternoon:** "Art Nouveau: at the heart of business" tour (page 5) and tea at the Excelsior brasserie (Art Nouveau brasserie in Nancy)

Are you planning to arrive in Nancy early in the morning? Why not start the day with coffee and croissants? Ask us for a quote! More information available on request

### 8. Sweet Nancy



From €49 per person

"Gourmand Lorraine" day

- **Morning:** tour of the "Historic Centre" (page 5) then travel to Auberge de la Mirabelle "Chez Léon" in Ferrières (44km from Nancy) where you will learn to cook the iconic "Quiche Lorraine".
- **Lunch**, including a taste of authentic Quiche Lorraine
- **Afternoon:** guided tour of Maison de la Mirabelle in Rozelieures, with tasting of some of the gastronomic specialities based on the delicious mirabelle plum.

### 9. Food Trail



From €19 per person

3 h

Why choose between cultural and foodie treats? Suck a Bergamot sweet as you visit Place Stanislas. Bite into a macaron as you admire an art nouveau façade. This city trail will introduce you to some of Nancy's most exquisite and delicious specialities.

Our prices, based on 20 people minimum, include: the guided tours and entry to the museums, the meal or meals mentioned excluding drinks, 1 overnight stay (where applicable) in a double room in a hotel (with breakfast), free chauffeur. Drinks are not included. Transport and tourist tax to be paid directly to the hotel on arrival. Extra: single room, guided tours on Sundays, public holidays and in languages other than French. Schedules are flexible according to opening days and times of the sites and museums.

## Urban tourism

Visit both Nancy and some of our beautiful neighbours

### 11. Nancy-Metz (2 days/ 1 night)



From €145 per person

Day 1

- **Afternoon:** choice of guided tours of Nancy (page 5) and guided tour of your choice of museum (Ecole de Nancy Museum or Museum of Fine Arts, page 8)
- **Dinner** at the hotel
- **Night** in a 3 star hotel

Day 2

- **Morning:** guided tour of Metz (55 km from Nancy), approx. 3 hrs, choose two of the three themes on offer:
  - **City of Metz:** from Saint-Etienne Cathedral to the old Citadel, and from the Imperial district to the Amphitheatre district, see all the important sites from the town's glorious history;
  - or **The Imperial District:** an outstanding city landscape with a wide range of artistic and architectural influences, in the typical contrasting style of the early 20th century;
  - or **Rabelaisian Road Ramble:** a walk around the medieval city exploring hospitality and gastronomy through the ages.
- **Lunch** featuring local products

Optional: guided tour of Centre Pompidou-Metz

### 12. Nancy-Lunéville (2 days/ 1 night)



From €134 per person

Day 1

- **Afternoon:** choice of guided tour of Nancy (page 5) and guided tour of your choice of museum (Ecole de Nancy Museum or Museum of Fine Arts, page 8)
- **Dinner** at the hotel
- **Night** in a 3-star hotel

Day 2

- **Morning:** guided tour of the Lumières de Lunéville château and its gardens (35 km from Nancy). A visit to Lunéville château is a fabulous way to learn about the 18th century. You will tour the outside of the buildings and the areas that have been restored.
- **Lunch**

Optional: guided tour of Saint-Jacques Church in Lunéville.

# Days out and day trips

### 13. Nancy-Toul (2 days/ 1 night)



From €149 per person

Food highlights of Lorraine

Day 1

- **Afternoon:** choice of guided tours of Nancy (page 5) and confectionery-making demonstration at Batt Chocolats (bergamot sweets, macarons and chocolate), followed by a tasting.
- **Dinner** at the hotel
- **Night** in a 3-star hotel

Day 2

- **Morning:** guided tour of Toul cathedral and Gris de Toul wine tasting (23 km from Nancy)
- **Lunch**

Optional visit to Sion-Vaudémont Hill

### 14. Nancy-Pont-à-Mousson (2 days/ 1 night)



From €154 per person

Arts & crafts in Meurthe

Day 1

- **Afternoon:** guided tour of the Au fil du Papier museum\* followed by a visit to the "Les Brasseurs de Lorraine" brasserie\* in Pont-à-Mousson (30 km from Nancy). Au Fil du Papier Museum: the only museum in France to house a large collection of works in lacquered papier-maché.
- Les Brasseurs de Lorraine: Lorraine's largest craft brewery. The tour explains the brewing process and includes a tasting.
- **Dinner** at the hotel
- **Night** in a 3-star hotel

Day 2

- **Morning:** choice of guided tours of Nancy (page 5) and guided tour of your choice of museum (Ecole de Nancy Museum or Museum of Fine Arts, page 8)
- **Lunch**

Optional guided tour of Prémontrés Abbey.

Our prices, based on 20 people minimum, include: the guided tours and entry to the museums, the meal or meals mentioned excluding drinks, 1 overnight stay (where applicable) in a double room in a hotel (with breakfast), free chauffeur. Drinks are not included. Transport and tourist tax to be paid directly to the hotel on arrival. Extra: single room, guided tours on Sundays, public holidays and in languages other than French. Schedules are flexible according to opening days and times of the sites and museums.

# Days out and day trips

## Urban tourism

### 14. Nancy-Saint-Nicolas-de-Port (2 days/1 night)



From €137 per person

#### The world of Saint Nicholas

##### Jour 1

- ▶ **Après-midi:** visite guidée de Nancy au choix (page 5) et visite guidée d'un musée au choix (musée de l'École de Nancy ou musée des Beaux-Arts, page 8)
- ▶ **Dîner** à l'hôtel
- ▶ **Nuitée** en hôtel trois étoiles

##### Jour 2

- ▶ **Morning:** guided tour of Saint-Nicolas Basilica in Saint-Nicolas-de-Port. This 16th century basilica is a gem of Gothic architecture and Lorraine's most important place of pilgrimage
- ▶ **Lunch**

Optional visit to the national stud at Rosinières-aux-Salines, visit to the Brewery Museum in Saint-Nicolas-de-Port

### 15. Nancy-Neufchâteau (2 days/1 night)



From €146 per person

#### Following in Joan of Arc's footsteps

##### Jour 1

- ▶ **Afternoon:** guided tour of Bois-Chenu Basilica. The basilica was built as a national monument in honour of Joan of Arc, close to the place where she is said to have heard her voices. Guided tour of The Major Sites of Neufchâteau: explore the town's monuments.
- ▶ **Dîner** à l'hôtel
- ▶ **Nuitée** en hôtel trois étoiles

##### Jour 2

- ▶ **Matin:** visite guidée de Nancy au choix (page 5) et visite guidée d'un musée au choix (musée de l'École de Nancy ou musée des Beaux-Arts, page 8)
- ▶ **Déjeuner**

Optional visit to Grand Roman amphitheatre, visit to Grand Roman mosaic

### 16. Nancy-Saint-Dié-des-Vosges (2 days/1 night)



From €150 per person

#### The Abbey Trail

##### Jour 1

- ▶ **Après-midi:** visite guidée de Nancy au choix (page 5) et visite guidée d'un musée au choix (musée de l'École de Nancy ou musée des Beaux-Arts, page 8)
- ▶ **Dîner** à l'hôtel
- ▶ **Nuitée** en hôtel trois étoiles

##### Jour 2

- ▶ **Morning:** guided tour of Saint-Dié-des-Vosges (the Godmother of America): a walk through the streets of the town to learn about its origins and recent history.
- ▶ **Lunch**
- ▶ **Afternoon:** a guided tour of an abbey of your choice Etival: the pink sandstone abbey church is a masterpiece of Romanesque art and work to embellish it continues to this day. Senones: learn about the history of the town, which was the capital of the Principality of Salm, and the abbey, where Voltaire once stayed. Moyennoutier: an enormous church with very impressive architecture

Optional guided tour of the Confiserie des Hautes-Vosges sweet factory.

Our prices, based on 20 people minimum, include: the guided tours and entry to the museums, the meal or meals mentioned excluding drinks, 1 overnight stay (where applicable) in a double room in a hotel (with breakfast), free chauffeur. Drinks are not included. Transport and tourist tax to be paid directly to the hotel on arrival. Extra: single room, guided tours on Sundays, public holidays and in languages other than French. Schedules are flexible according to opening days and times of the sites and museums.

## Industrial Tourism

The region's underground iron and salt means that it not only boasts some remarkable vestiges of a rich mining heritage, but remains a producer of salt, an essential in cuisine, de-icing and the chemical industry. Explore the fascinating world of salt, both above and below ground. Some site tours (marked with an asterisk) are in French only. An interpreter will be required for foreign-language tours.

### Salt



#### Places of interest open to groups:

- ▶ **Varangéville salt mine (20km):** visit France's last working salt mine
- ▶ **Dieuze Royal Salt Works (45km):** a salt works operated since the Middle Ages
- ▶ **Haraucourt Salt Museum and Observatory (19km):** a unique site where visitors can learn all about Lorraine's salt industry from the 19th century through to the present day

Our prices, based on 20 people minimum, include: the guided tours and entry to the museums, the meal or meals mentioned excluding drinks, 1 overnight stay (where applicable) in a double room in a hotel (with breakfast), free chauffeur. Drinks are not included. Transport and tourist tax to be paid directly to the hotel on arrival. Extra: single room, guided tours on Sundays, public holidays and in languages other than French. Schedules are flexible according to opening days and times of the sites and museums.

# Days out and day trips

## Iron



#### Places of interest open to groups:

- ▶ **Jarville Iron History Museum (less than 5km):** see page 8
- ▶ **Neuves-Maisons Val de Fer Mine (17km):** visit to an iron ore mine, with a look at the miners' working conditions
- ▶ **Themed guided tour entitled From Jean Lamour to Jean Prouvé in Nancy:** a tour of the city centre looking at the major names from the history of Nancy's wrought-iron craft

## Glass



#### Places of interest open to groups:

- ▶ **Company of Glass-Blowers (CERFAV) at Vannes-le-Châtel (40km):** tour of the site and glass-blowing demonstration
- ▶ **Baccarat Crystal Museum (60km):** a museum dedicated to the history of the famous crystal, known worldwide for its outstanding quality
- ▶ **Themed guided tour of the Daum Collection in Nancy:** this tour tells the story of the Daum glassworks from its creation to the present day

## Wood



#### Places of interest open to groups:

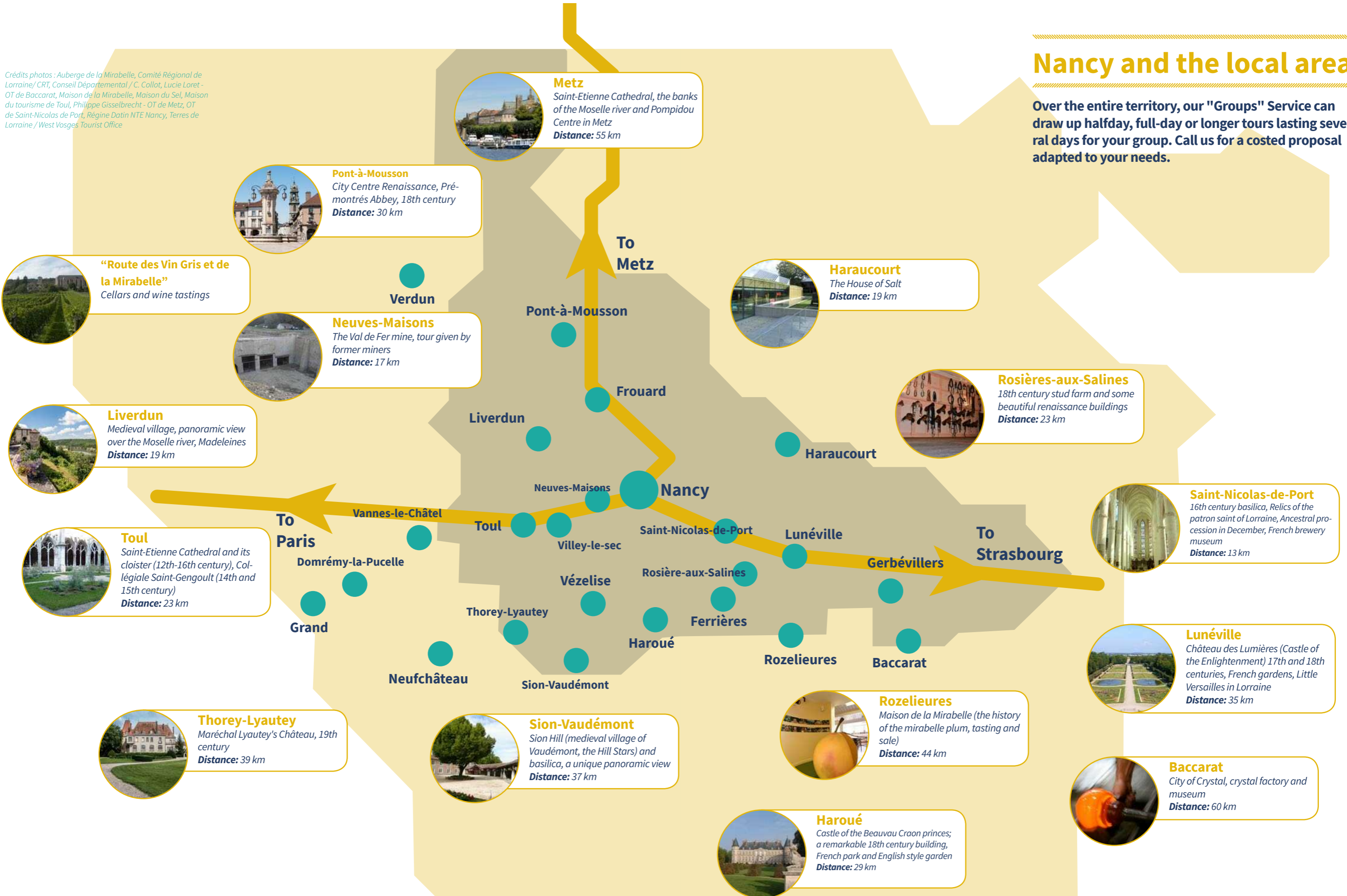
- ▶ **Compagnons des Walser at Mazerulles (20km):** creation and restoration of wooden furniture
- ▶ **Visit to a saw mill at Saint-Dié-des-Vosges (90km):** learn about woodwork
- ▶ **Visit to a chair and furniture manufacturer at Neufchâteau (60km):** discover very specialised skills and watch a demonstration



Crédits photos : Auberge de la Mirabelle, Comité Régional de Lorraine / CRT, Conseil Départemental / C. Collot, Lucie Loret - OT de Baccarat, Maison de la Mirabelle, Maison du Sel, Maison du tourisme de Toul, Philippe Gisselbrecht - OT de Metz, OT de Saint-Nicolas de Port, Régine Datin NTE Nancy, Terres de Lorraine / West Vosges Tourist Office

## Nancy and the local area

Over the entire territory, our "Groups" Service can draw up half-day, full-day or longer tours lasting several days for your group. Call us for a costed proposal adapted to your needs.



All commentary is suited to the age of the students. Guides in French, German and/or English (depending on activity) for use at key points in the treasure hunt: introduction, additional explanations about certain points on the itinerary, answers and corrections and award of prizes. (Groups must be accompanied by responsible adults).

## Guided tours



### Discovering the historic city centre

1h - 1h30 From Year 4 to Year 13

**Price:** €117 - Based on a minimum of 25 students – valid Monday to Saturday

The tour includes Place Stanislas and Place de la Carrière. The tour covers all the achievements of the last Duke of Lorraine, revealing his complex personality. The tour of this ancient, medieval and Renaissance town focuses on a number of important buildings that played a key part in the Lorraine region's history: the Ducal Palace, aristocratic homes, the Craffe gate, the church of Saint Epvre. The tour highlights the numerous details found carved into the stone or wood: people, animals, patterns, decorative motifs, etc. Tiere, dekorative Motive usw.

### Discovering Art Nouveau

1h30 From Year 4 to Year 13

**Price:** €117 - Based on a minimum of 25 students – valid Monday to Saturday

From Place Maginot to Place Stanislas, the tour focuses on business premises dating from around 1900: shops, banks and other buildings. The importance given to the detail illustrates the entrepreneurial spirit that characterised the business classes at the time, and is highlighted by close examination of the buildings from different perspectives: technological, structural, decorative, symbolic, etc.

### The City's Animals

1h From pre-school to Year 4

**Price:** €117 - Based on a minimum of 20 students – valid Monday to Saturday

Dog and cat? Pigeon or sparrow? The tour takes a close look at the wonderful variety of stone animals that adorn the city's façades.

### Around Place Stanislas

1 h - From pre-school to Year 4

**Pricing:** €117 - Based on a minimum of 20 students – valid Monday to Saturday

Who was Stanislas, the former king of Poland and the last Duke of Lorraine? Why did he build this beautiful royal square in the heart of Nancy? Recognising and explaining the numerous symbols that are integral to its decoration.

## City trails



### Historic City Centre trail

**Duration:** 2 hours, French only, On foot, Motor disabilities

**Ages 8 to 16 The trail is tailored to the age of the participants**

**Price: €130 per group (maximum 30 pupils) - available Monday to Saturday (except public holidays)**

Explore Place Stanislas and Ville-Vieille in the company of your guide by following a trail packed with questions and explanations.

### Art Nouveau trail

**Duration:** 2 hours, French only, On foot, Motor disabilities

**Ages 8 to 16 The trail is tailored to the age of the participants**

**Price: €130 per group (maximum 30 pupils) - available Monday to Saturday (except public holidays)**

A city-centre trail led by a guide to introduce your group to art nouveau architecture.

### Multilingual trail - French & German or French & English

**Duration:** 2 hours in 2 languages, On foot, Motor disabilities

**Ages 12 to 16 The trail is tailored to the age of the participants**

**Price: €250 for one French-speaking group and one German- or English-speaking group - available Monday to Saturday (except public holidays)**

Pupils will follow this trail around historic Nancy in bilingual groups, offering them a fantastic opportunity to communicate with their foreign-language peers as they explore. The trail is led by two guides: one French-speaking and the other German-/English-speaking

2 free parking places reserved for coaches:

- ▶ - Quai Sainte-Catherine
- ▶ - Cours Léopold

**There is a drop-off area** on Rue Saint-Catherine, on the corner with Rue Bailly, a few metres from Place Stanislas and just before the pedestrian zone.

**Paid public toilets** nearby. If closed, there are accessible toilets in the Pépinière Park.

**A traffic plan** is available on the Groups page of our website.

In the event of problems or delay, Tourist Office contact numbers are as follows:

- ▶ **Group Services:** +33 (0)3 83 35 90 02 (Monday to Friday, 9am to 12.30pm and 2pm to 5.45pm)
- ▶ **Hospitality Team:** +33 (0)3 83 35 22 41 (during Tourist Office opening hours)

### Brochures

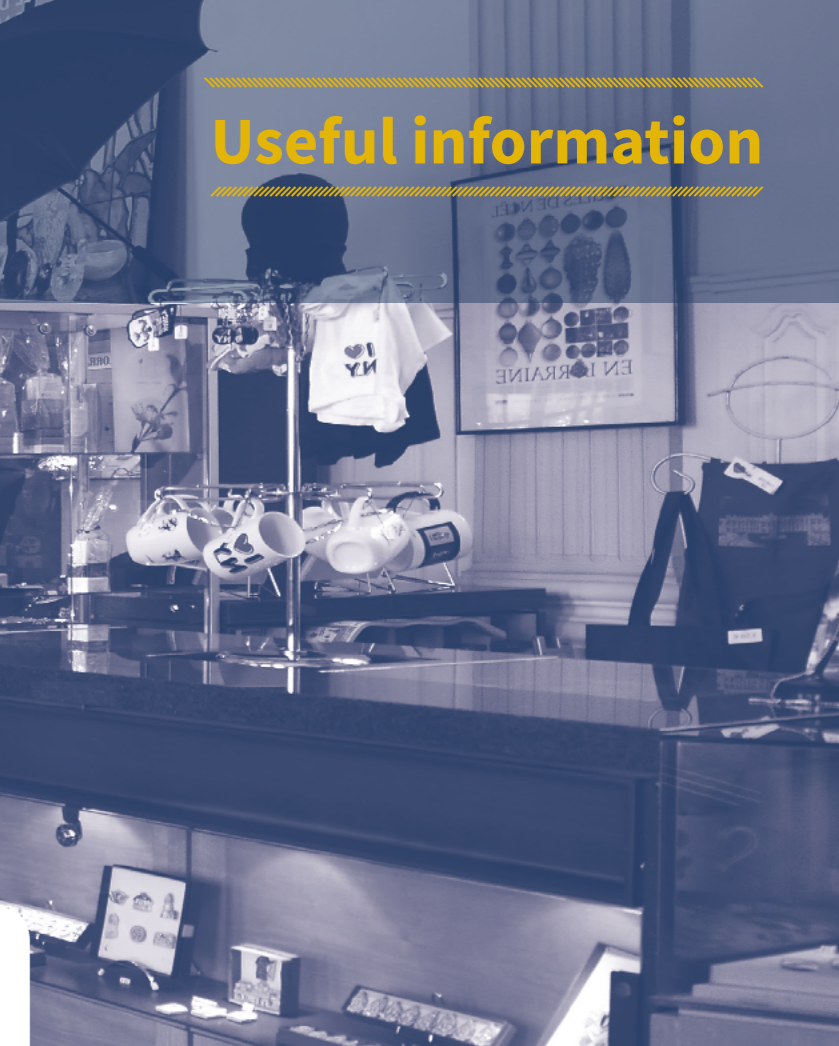
Multiple copies of all our brochures are available at the Tourist Office during opening hours or can be downloaded from our website:

<http://en.nancy-tourisme.fr/practical-info/request-brochures/>

Postage is payable when requesting bulk copies of brochures (more than 5 copies).

Check the Groups page of our website <http://en.nancy-tourisme.fr/groups/>, more information at:

- ▶ New products and all our latest news
- ▶ Online quote requests
- ▶ Our general conditions of sale



## The Tourist Office shop

The Tourist Office shop carries a selection of gifts and souvenirs from Nancy: postcards and guide books, bags, t-shirts, household linens, accessories, Saint-Nicholas products, jewellery, arts and crafts products, designer objects and fine foods!

We offer a range of corporate gifts suited to all occasions and budgets: local and regional specialities, arts and crafts products and items that can be personalised to display your logo or message. Our knowledgeable staff will be pleased to help you find the perfect gift.

### SHOP

same opening hours as the tourist office - including sundays (except january).

**Place Stanislas – 54000 Nancy**

**Tel. +33 (0)3 83 35 80 10**

[www.nancy-tourisme.fr](http://www.nancy-tourisme.fr)



# NANCY

## **Our service in charge of groups is at your disposal:**

- ▶ To book guided tours
- ▶ To sell day trips and short stays
- ▶ To propose you a personalized program in Nancy and its area
- ▶ To send you an offer within a maximum of 72 hours
- ▶ To answer you in French, in English or in German
- ▶ A dedicated service for personalized offers
- ▶ Label Tourism and Disability guaranteeing an adapted welcome
- ▶ **More information:**

<http://en.nancy-tourisme.fr/groups/>

**Photo de couverture:** Maël Joanas / **Crédit photo:** Ville de Nancy, Régine Datin, Philippe Caron, J-fort, Francis Receveur, Nancy Tourisme Evénement, Arno Paul, Grégory Flusin, Office de Tourisme de Metz, Philippe Massit, OTOV, Lucey CRT, C. Voegelé, C. Collot, Lucie Loret, Ville de Saint-Dié-des-Vosges.

Document édité par Destination Nancy – Office de tourisme – photos non contractuelles – Conception Code-CodeC – Imprimé par La Nancéienne d'impression

DESTINATION  
**NANCY**  
OFFICE DE TOURISME

**métropole**  
**GrandNancy**

  
france.fr

  
QUALITÉ  
TOURISME

## **DESTINATION NANCY - OFFICE DE TOURISME**

**Adresse postale :** 1 PLACE DE LA RÉPUBLIQUE - CS 60663 - 54063 NANCY CEDEX

**Accueil des publics :** PLACE STANISLAS - 54000 NANCY

**Tel.:** +33 (0)3 83 35 80 10

**E-mail:** [reservations@destination-nancy.com](mailto:reservations@destination-nancy.com)

**Opening hours of our service:** all year round (except on bank holidays) from Monday to Friday from 9am to 12:30am and from 2pm to 5:45pm (5pm on Fridays)

**Hotline on weekends and bank holidays:** +33 (0)3 83 35 22 41 (reception service)