

DESTINATION  
  
OFFICE DE TOURISME

# ART NOUVEAU

Itineraries of the Nancy School



## The Nancy School

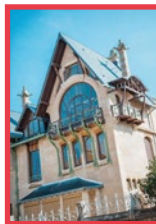
Glass art, ceramics, furniture, ironwork, bookbinding, stained glass, sculpture and architecture: between 1880 and 1914, an entire generation of artists and Nancy industrialists reinvented the decor and daily life of the city with audacity and brilliance, drawing inspiration from plants and science.



## Contents

### NANCY, THE BIRTHPLACE OF ART NOUVEAU

- The emergence of the movement
- The Provincial Alliance of the Industries of Art
- The Nancy School and botany



### NOT-TO-BE-MISSED

- The Nancy School Museum
- The Villa Majorelle
- At the Fine Arts Museum
  - The Daum Collection
  - The artists of the Nancy School
- The Daum Collection at the Fine Arts Museum




### DISCOVER NANCY'S ART NOUVEAU

- Self-guided itineraries
  - 1• At the heart of business, from the train station to Point Central
  - 2• Saurupt Park
  - 3• Around the Thermal Quarter
  - 4• From the train station to the Villa Majorelle
- Guided itineraries
  - Guided or audio-guided tours
  - Unique guided tours
  - The tourist train
- Applications



= FREE ACCESS

A portrait painting of Emile Gallé, a French glass designer and artist. He is depicted from the waist up, wearing a light-colored, long-sleeved robe. He has a full, dark beard and mustache, and his hair is dark and receding. He is looking directly at the viewer with a serious expression. In his right hand, he holds a pair of dark, thin objects, possibly glasses or a tool. The background is a textured, light-colored wall.

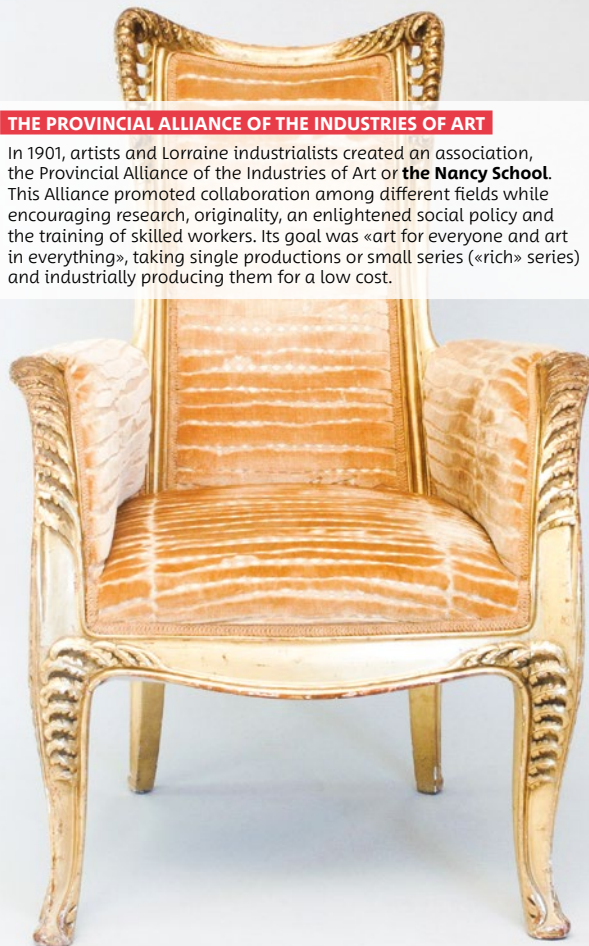
## Nancy, the birthplace of Art nouveau

### THE EMERGENCE OF THE MOVEMENT

In 1871, after the annexation of Alsace-Moselle by Prussia, a large population from these territories settled in Nancy. These «optants» (opting for French citizenship) brought capital, businesses and know-how that reinforced the local economy. The conditions came together and encouraged the emergence of a modern style, centred around artists, industrialists and patrons such as Emile Gallé and Eugène Corbin.

### THE PROVINCIAL ALLIANCE OF THE INDUSTRIES OF ART

In 1901, artists and Lorraine industrialists created an association, the Provincial Alliance of the Industries of Art or **the Nancy School**. This Alliance promoted collaboration among different fields while encouraging research, originality, an enlightened social policy and the training of skilled workers. Its goal was «art for everyone and art in everything», taking single productions or small series («rich» series) and industrially producing them for a low cost.

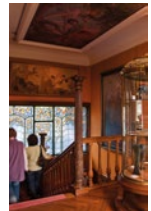




### THE NANCY SCHOOL AND BOTANY

Emile Gallé, a trained botanist and the soul of the movement, found his greatest sources of inspiration in nature, in particular in the flora of Lorraine. Architecture, furniture, glass art: nature is everywhere. «My roots are in the depths of the woods» was carved by Majorelle in the doors to the Gallé Workshops (today in the garden of the Nancy School Museum).

### NOT-TO-BE-MISSED



### THE NANCY SCHOOL MUSEUM



Housed in the home of the patron Eugène Corbin, this reconstitution of an Art Nouveau interior is the only museum of its kind in the world. A priceless collection of glassware by Emile Gallé is on display on the main floor.

The garden, awarded the remarkable garden label and accessible free of charge, cultivates local species and products of famous breeders affiliated with the Nancy School. These plants have been inexhaustible sources of inspiration. In the garden, don't miss the Aquarium pavilion, the doors of the Gallé Workshops and one of the first funerary monuments of this movement.



**THE VILLA MAJORELLE**



The fruit of a collaboration of Henri Sauvage, influenced by Hector Guimard and Lucien Weissenburger, this beautiful three-storey house, built for Louis Majorelle and his family, features several semi-circle windows and floral patterns covering the exterior. Louis Majorelle himself created the ironwork as well as the interior furnishings, wood panelling and staircase. He chose to set up his studio on the third floor of the villa under the gable roof, with a sumptuous arched bay window featuring shapes evoking the branches of a tree. The house is called Villa JIKA (for Jane Kretz, Louis Majorelle's wife).

## AT THE FINE ARTS MUSEUM



### ► The Daum Collection

The Daum collection of Nancy's Fine Arts Museum is a rich selection of more than 950 pieces, including 300 on display, unrivalled by any museum in France or abroad. The collection is significant in terms of both aesthetics and history, showcasing the past productions of the glassworks, from its beginnings in the 1880s all the way to the creations of the 1990s. A beautiful journey through time. The display in the basement of the Fine Arts Museum is simply breathtaking!



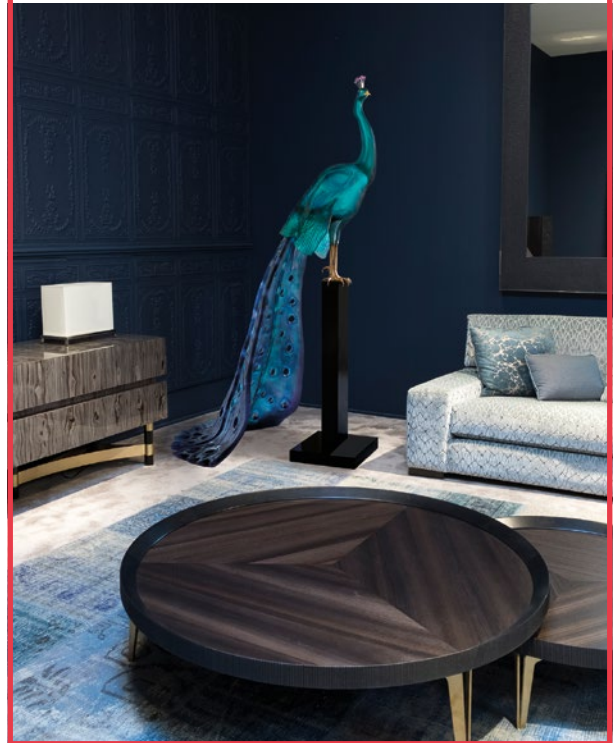


#### ◆ The artists of the Nancy School

Their works presented in the collections of the Fine Arts Museum bring to light the movement of the Nancy School, known for decorative arts and architecture. The works include the paintings of Victor Prouvé, *L'Île Heureuse*, *La Joie De Vivre* and *Les Voluptueux*, as well as the works of Camille Martin and the regional painter and naturalist Emile Friant. Also discover the Cartier-Bresson Collection illustrating Japonism, a movement that partly inspired the Nancy School.

#### NANCY AND THE DAUM GLASSWORKS

The Daum Family are part of the «optants» that arrived from Alsace-Moselle when the territories were annexed by Prussia in 1871. After a few difficult years of crystal production, the artistic department was created in 1892, marking the rise of one of the most creative and prestigious crystal works in the world. Daum's factories are still located in Nancy and in Vannes-le-Châtel and the company continues to dazzle today. A boutique on Place Stanislas displays the work of these masters of the glass arts.



Paon Tropical by Madeleine van der Knoop

# Discover Nancy's Art nouveau heritage

Parc  
de la Curé d'Air

Ville  
Vieille

Espace  
XVIII<sup>e</sup> siècle

Charles III

Parc de Saurupt

**Itinerary 1**  
AT THE HEART OF BUSINESS

**Itinerary 2**  
SAURUPT PARK

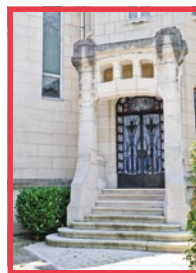
**Itinerary 3**  
AROUND  
THE THERMAL  
QUARTER

**Itinerary 4**  
FROM THE TRAIN STATION  
TO THE VILLA MAJORELLE

**m** Museum



Architect Louis Lanternier



## Itinerary 2

### SAURUPT PARK

A garden city fantasy, this project for a private park in the south of the city was entrusted in 1901 to architects Émile André and Henry Guillon. Only six villas were built, each of them exceptional. The other buildings were built between 1920-1930 in a pure Art Deco style.

#### 20 THE CARETAKER'S LODGE 1902

2, rue des Brice  
Architects Émile André and Henry Guillon

#### 21 VILLA LES GLYCINES 1902-1904

5, rue des Brice  
Architect Émile André

#### 22 VILLA DES ROCHES 1904

6, rue des Brice  
Architect Émile André

#### 23 VILLA MARGUERITE 1903-1905

3, rue du Colonel-Renard  
Architect Joseph Hornecker

#### 24 RUE DU MARÉCHAL GÉRARD

Art nouveau Town Houses

#### 25 VILLA LANG 1905-1906

1, bld Georges-Clémenceau  
Architect Lucien Weissenburger

#### 26 VILLA FRÜHINSHOLZ 1908-1910

77, av. du Général-Leclerc  
Architect Léon Cayotte  
Stained glass by Jacques Gruber





## Itinerary 3

### AROUND THE THERMAL QUARTER

Nancy's spa district was born in the early 20th century and expanded for the international exhibition of Eastern France in 1909. The city yields to nature in the streets lined with family homes and small gardens.

#### 27 MUSÉE DE L'ÉCOLE DE NANCY 1911-1912

Once the villa of Eugène Corbin, a patron of the arts, it is now home to one of the finest collections of Art Nouveau in the world.

36-38, *rue du Sergent-Blandan*  
Aquarium designed by Lucien Weissenburger  
Stained glass by Jacques Gruber

#### 28 VILLA LEJEUNE 1902-1903

30, *rue du Sergent-Blandan*  
Architect Émile André

#### 29 THE BIET HOUSE 1907

41, *rue Pasteur*  
Architects Georges Biet and Eugène Vallin

#### 30 THE RENAUDIN HOUSE 1902

49-51, *rue Pasteur*  
Architect Lucien Bentz

#### 31 PARC SAINTE-MARIE

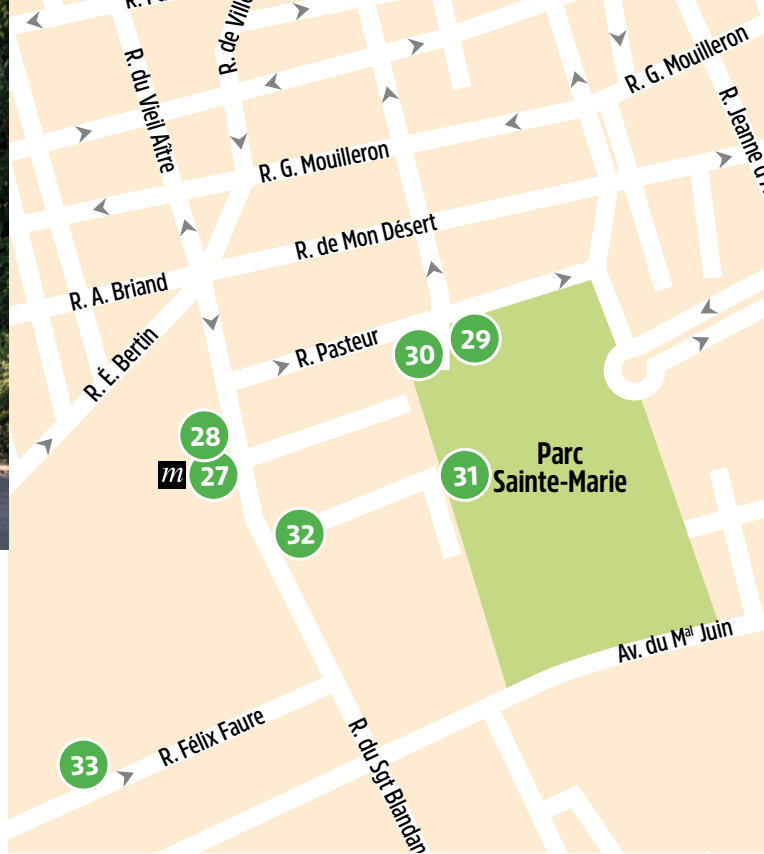
Site of the 1909 Eastern France International Exhibition  
(Alsace-style house)

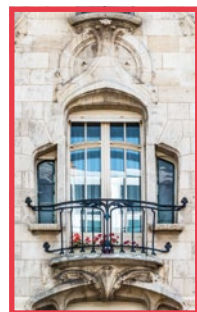
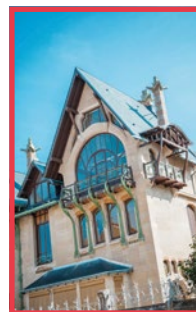
#### 32 NANCY THERMAL SWIMMING POOLS 1910-1913

*Rue du Sergent-Blandan*  
Architect Louis Lanternier  
Ceramics by Gentil-Bourdet

#### 33 RUE FÉLIX-FAURE ESTATE 1900-1910

Architect César Pain





## Itinerary 4

### FROM THE TRAIN STATION TO THE VILLA MAJORELLE

Between 1872 and 1900, the city's population climbed from 45,000 to more than 100,000 as a new town was built to the west of the train tracks. The area features prestigious apartment buildings and private villas, including the magnificent Villa Majorelle that was recently restored.

#### 34 VILLA MAJORELLE (OR VILLA JIKA) 1901-1902

1, rue Louis-Majorelle  
Architect Henri Sauvage  
Stained glass by Jacques Gruber  
Wrought iron by Louis Majorelle  
Glazed stoneware by Alexandre Bigot. Possible visits of Villa Majorelle (reservations)

#### 35 THE MANGON BUILDING 1902

3, rue de l'Abbé-Gridel  
Architect Paul Charbonnier

#### 36 THE FRANCE-LANORD BUILDING 1902-1904

71, avenue Foch  
Architect Émile André

#### 37 THE LOMBARD BUILDING 1902-1903

69, avenue Foch  
Architect Émile André

#### 38 THE LOPPINET BUILDING 1902

45, avenue Foch  
Architect Charles Désiré Bourgon  
Sculptures by Auguste Vautrin

#### 39 DR JACQUES' HOUSE 1905

41, avenue Foch  
et 37, rue Jeanne d'Arc  
Architect Paul Charbonnier  
Wrought iron by Louis Majorelle  
Stained glass by Jacques Gruber  
Sculptures by Léopold Wolff

#### 40 THE JACQUES PHARMACY 1903

33, rue de la Commanderie  
et 55, rue Jeanne-d'Arc  
Architect Lucien Bentz  
Sculptures by Albert Vautrin

#### 41 THE BIET BUILDING 1901-1902

22, rue de la Commanderie  
Architects Georges Biet and Eugène Vallin  
Stained glass by Jacques Gruber  
Metallic structure by Jean Prouvé

#### 42 DR SPILLMANN'S HOUSE 1907-1908

34, rue Saint-Léon  
Architect Lucien Weissenburger



## Other outstanding buildings

### 43 THE ROSFELDER PHARMACY 1902

12, rue de la Visitation  
Architect Émile André  
The Laurent Neiss shop-front

### 44 MUSÉE DES BEAUX-ARTS

3, place Stanislas  
The outstanding Daum collection

### 45 TRADE UNION AND COMMUNITY CENTRE 1900-1902

2, rue Drouin  
Architect Paul Charbonnier  
Sculptures by Victor Prouvé  
Woodwork by Eugène Vallin

### 46 HOUSE AND WORKSHOP EUGÈNE VALLIN 1895-1896

6-8, boulevard Lobau  
Architect Eugène Vallin

### 47 THE GAUDIN HOUSE 1899

97, rue Charles III  
Architect Georges Biet  
Stained glass by Jacques Gruber

### 48 MAISON BERGERET 1903-1904

24, rue Lionnois  
Architect Lucien Weissenburger  
Stained glass by e Jacques Gruber  
Wrought iron by Louis Majorelle

### 49 THE ROYER PRINTING WORKS 1899-1900

3 bis, rue de la Salpêtrière  
Architect Lucien Weissenburger  
Sculptures by Ernest Bussière

### 50 THE GESCHWINDENHAMER HOUSE 1905

6 ter, quai de la Bataille  
Architects Joseph Homecker and Henri Gutton  
Sculpture by Léopold Wolff

### 51 ETS GALLÉ 1912-1926

86, boulevard Jean-Jaurès  
Architects Henri-Louis and Henri-Victor Antoine

### 52 DR HOCHÉ'S HOUSE 1906-1907

16, rue Émile-Gallé  
Architect Georges Biet

### 53 THE DUCRET HOUSE 1908

66-66 bis, rue Jeanne-d'Arc  
Architects Paul Charbonnier and Émile André

### 54 PRÉVILLE CEMETERY

Rue Raymond-Poincaré  
Corbin funerary monument 1901  
Émile Gallé's tomb 1904  
The Majorelle family tomb 1912

### 55 THE NOBLOT HOUSE 1912

2, rue Albin-Haller  
Architect Émile André  
Stained glass by Jacques Gruber

### 56 THE COLLIGNON HOUSE 1905

55, rue de Boudonville  
57 THE GUINGOT HOUSE 1903

10, rue d'Auxonne  
Architect Lucien Weissenburger

### 58 THE SCHOTT HOUSE 1900

6, quai Choiseul  
Glass roof by Antoine Bertin

### 59 MAISONS HUOT 1903

92-92 bis, quai Claude Le Lorrain  
Architect Émile André  
Stained glass by Jacques Gruber

### 60 THE BOURET HOUSE 1887

65, rue de la Ravinelle  
61 THE SIMETTE HOUSE 1900

12 bis, rue de Metz  
Architect Charles Désiré Bourgon

### 62 THE WEISSENBURGER BUILDING 1903-1904

1, bld Charles V  
Architect Lucien Weissenburger  
Stained glass by Jacques Gruber  
Wrought iron by Louis Majorelle

### 63 THE CHARDOT MANSION 1905-1906

52, cours Léopold  
Architect Lucien Weissenburger

### 64 THE KEMPFF BUILDING 1903

40, cours Léopold  
Architects Félicien and Fernand César

### 65 THE LUC HOUSE

25, rue de Malzéville  
Architect René Hermant  
Stained glass by Jacques Gruber

### 66 DAUM CRYSTAL Glass Works

17, rue des Cristalleries  
Glass-works shop



## Guided tours Art Nouveau

### AUDIO-GUIDED TOURS

Starting at the Tourist Office, discover the Art Nouveau heritage of the city centre along a 10-stage itinerary. In French, English, German and Japanese. See our website [www.nancy-tourisme.fr](http://www.nancy-tourisme.fr).

### GUIDED VISIT

Held only once or twice in the tourist season and only in French (see the website [www.nancy-tourisme.fr](http://www.nancy-tourisme.fr)).

### TOURIST TRAIN

Every Sunday from 1 April to 30 September at 10:30 a.m.

## all thematic free tours with Apps

### WITH YOUR SMARTPHONE

#### Runnin'City app:

In partnership with Greater Nancy and Destination Nancy, the app combines GPS voice instructions and audio-guided tourist commentary of the monuments and points of interest the user passes. Three itineraries of 5 km, 8.6 km and 11 km to learn more about the heritage of the towns of Laxou, Malzéville, Nancy, Saint-Max, Tomblaine, Vandœuvre-lès-Nancy and Villers-lès-Nancy.

#### Zévisit app:

3 itineraries to download for free at [www.nancy-tourisme.fr](http://www.nancy-tourisme.fr) or via the application

- **Walking** : in the footsteps of Duke Stanislaw
- **Cycling**: from a fairy-tale castle to a little Moroccan palace on a visit full of surprises
- **By tramway**: from Jean Nouvel to the crystal works, from the Botanical Gardens to the floral patterns on the Nancy School façades

#### Baludik app:

Uncover the city's little secrets on a scavenger hunt for the whole family. And to top it off, your Perfect Heritage Explorer certificates are waiting for you at the Tourist Office. Available for download via the application.

## Information

On our website or at the Tourist Office, Place Stanislas in Nancy (tel. +33(0)3 83 35 80 10)

**DESTINATION NANCY • TOURIST OFFICE OF GREATER NANCY**  
TOURIST OFFICE: Place Stanislas - 54000 NANCY

MAILING ADDRESS: 1 Place de la République  
CS 60663 • 54063 NANCY Cedex

CONTACT : tel. +33(0)3 83 35 80 10  
[www.nancy-tourisme.fr](http://www.nancy-tourisme.fr)

### ◆ OUR OPENING TIMES

- Monday from 1.00pm to 6.30pm
- Tuesday to Sunday 9.30am to 6.30pm

Closed on Sundays from 24 December to 31 March.

Closed on 25 December and 1 January.

### ◆ OUR SERVICES

Visits and guided tours, citypass, shop, local products, handicraft, books, gifts, free booking for accommodation, tickets (concerts, shows...), entertainment, cultural agenda, events, congress.



### ◆ FREE WIFI

[www.nancy-tourisme.fr](http://www.nancy-tourisme.fr)



**métropole  
GrandNancy**