



DESTINATION  
 **Nancy**  
OFFICE DE TOURISME

# GROUPS CITY GUIDE 2022

DESTINATION NANCY - Surprises to discover

**métropole**  
**GrandNancy**



LE  
**MONUMENT PRÉFÉRÉ**  
DES FRANÇAIS  
2021

# Contents

p.3/5  
**GETTING TO NANCY**

p.6/7  
**WELCOMING NANCY**

p.8/9  
**VIBRANT NANCY**

## 2022 HIGHLIGHTS

p.10/15  
**NOT-TO-BE-MISSED NANCY**

p. 10/11  
Tours and short breaks  
2022

p. 12/13  
Guided tour prices

p. 14  
Alternative Nancy

p. 15  
Nancy in small groups

p.16/17  
**NANCY FOR YOUNG VISITORS**

p.18/19  
**EPICUREAN NANCY:  
GOURMET TOURISM**

p.20/21  
**CULTURAL NANCY:  
MUSEUMS IN GREATER NANCY**

p.22/23  
**GREATER NANCY AREA**

p.24  
**OUR HOLIDAY IDEAS**

p.25/27  
**ENTERTAINING NANCY**

p.25  
Nancy in the summer

p.26/27  
Experience the Saint-  
Nicholas Festivities in  
Nancy

p.28/29  
**LORRAINE**

p.28  
Industrial tourism

p.29  
Destination Lorraine

p.30/31  
**MAP OF THE REGION**



## INCOMING GROUPS SERVICE

DESTINATION NANCY provides you with its expertise and in depth knowledge of the area. Simply send us a request and our incoming groups service will quickly put together programme ideas with your choice of accommodation, visits and transfers.

### Contact:

Tel.: +33 (0)3 83 35 90 02  
reservations@destination-nancy.com  
[www.nancy-tourisme.fr](http://www.nancy-tourisme.fr) > Groups section

## OUR SERVICES

- A single contact person for personalised service
- An answer to your request within 72 hours
- Adapted programs guaranteed by the Tourisme & Handicap\* label
- Guided tours in several foreign languages

## Legend for guided tours

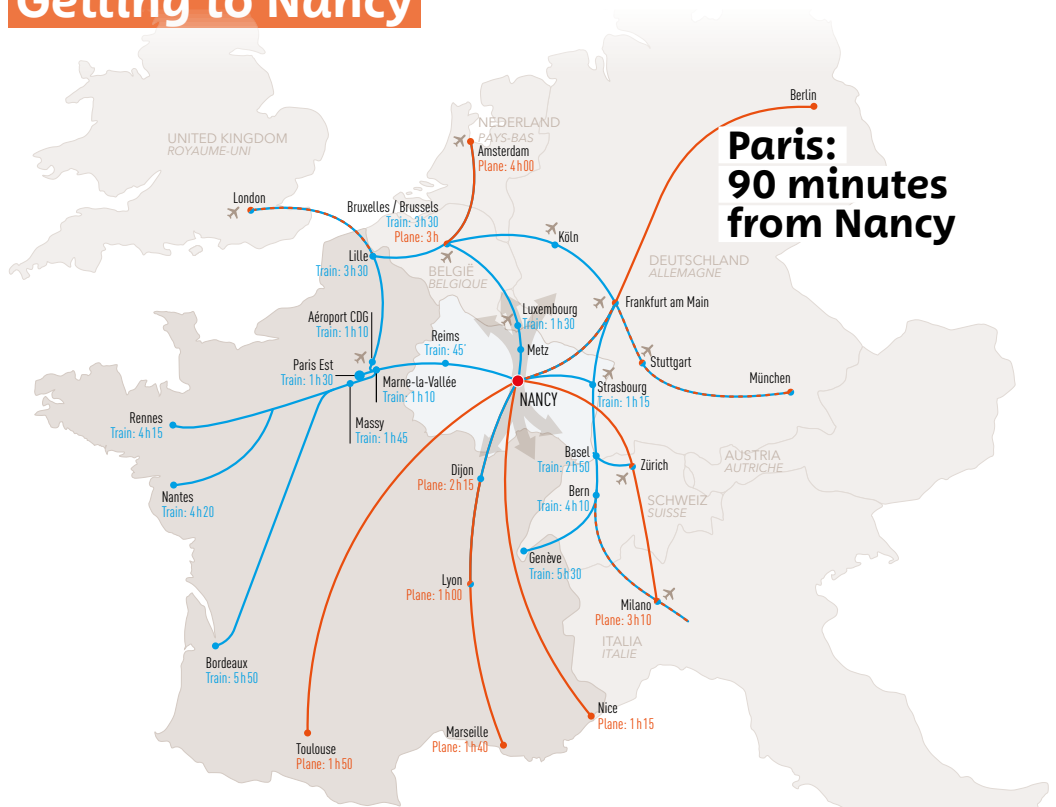
- Duration
- Date
- On foot
- By bus
- Audiophones available for tours
- Physical disability
- Visual disability
- Auditory disability

\* DESTINATION NANCY has been awarded the Tourisme & Handicap label guaranteeing tours adapted for visitors with physical, visual and auditory disabilities.



■ ■ RÉPUBLIQUE FRANÇAISE

# Getting to Nancy



**52,000**  
students  
(20% of the population)



**15,500**  
businesses



**N°1** in Lorraine  
for shopping  
(covered market and shopping centre 3 minutes' walk from the train station)



More than  
**2,200**  
hotel rooms



**3**  
competitiveness hubs



**4**  
sectors of excellence



**3**  
"Remarkable Gardens"  
(tourism label)



The **WHOLE**  
city centre easily accessible on foot

# Getting to Nancy



## BY TRAIN

- Paris-Nancy: 1.5 hr
- Strasbourg-Nancy: 1 hr 15 min
- Luxemburg-Nancy: 1.5 hr

### Nancy Train Station

3 place Simone Veil  
Tel.: +33 (0)8 36 35 35 35

### Lorraine TGV SNCF Station

(38 km from Nancy)  
Route Départementale 910  
57420 LOUVIGNY  
[www.oui.sncf](http://www.oui.sncf)

### Connections to major French cities from the Lorraine TGV station

Lille (2 hr 5 min), Nantes (3 hr 55 min), Rennes (3 hr 55 min), Bordeaux (5 hr 10 min), Marne-la-Vallée TGV (1 hr 10 min), Massy TGV (1 hr 45 min)

**Shuttles from the Lorraine TGV station to the centre of Nancy**

## BY COACH

From Paris or Strasbourg via the A4 motorway  
From Brussels, Luxembourg, Metz or Dijon via the A31 motorway

## BY PLANE

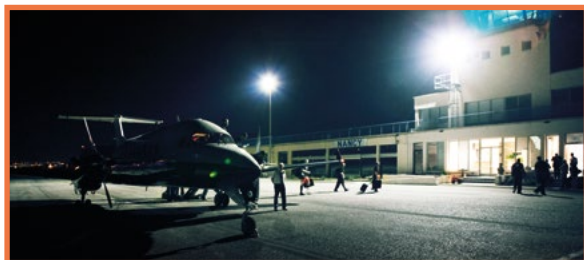
### Metz Nancy Lorraine Airport

(45 km north of Nancy)  
57420 GOIN  
Tel.: +33 (0)3 87 56 70 00

[www.lorraineairport.com](http://www.lorraineairport.com)  
Shuttles run between the airport and Nancy city centre (timetables can be found on the airport's website)

### Grand Nancy Aéroport

Nancy-Tomblaine Airport  
54510 TOMBLAINE  
Tel.: +33(0)3 83 21 56 90





## GETTING AROUND TOWN

### Trams and buses:

Public transportation is free every weekend. There are park and ride facilities on the outskirts of the city.

Try to buy your transport passes before arrival; the group pass is for 10 people or more.

Orders must be made at least 48 hours prior to arrival.

**Bookings:** Allostan +33 (0)3 83 30 08 08

[www.reseau-stan.com](http://www.reseau-stan.com)



- Map with itineraries and parking for coaches and tour buses available for download at [www.nancy-tourisme.fr](http://www.nancy-tourisme.fr) > Groups section (French)
- Two free coach parking areas: quai Sainte-Catherine and Cours Léopold.
- Drop-off point on Rue Sainte-Catherine at the corner of Rue Bailly, just a few metres from Place Stanislas right before the pedestrian zone.
- Public toilets nearby.



## NANCY CITY GUIDE AND CITY MAPS

- City maps available free of charge at the reception of the Tourist Office during opening hours
- NANCY CITY GUIDE available for download from our website

<https://www.nancy-tourisme.fr/en/prepare-your-stay/services-of-the-tourist-office/documentation/>



# Welcoming Nancy

**Nancy welcomes you with open arms. From the Ville Vieille to Place Stanislas, with its museums, performance venues, bars and restaurants, the capital of the dukes of Lorraine is passionate about cultivating its art de vivre lifestyle.**



Save time and money  
with the Nancy City  
Pass!

## THE 3 GOLDEN AGES OF NANCY



Organisation  
des Nations Unies  
pour l'éducation,  
la science et la culture



Places Stanislas, de la Carrière  
et d'Alliance à Nancy  
inscrites sur la liste du patrimoine  
mondial en 1983



### RENAISSANCE

During the Renaissance, the Duchy of Lorraine and its capital city of Nancy enjoyed an exceptional period in terms of politics, economics, art and academics. In the Ville Vieille, the dukes updated their palace (the gatehouse of the Ducal Palace is one of the first examples of Renaissance architecture in Lorraine) and several monuments were built: Cordeliers Chapel, Place de la Carrière, the private homes of high-ranking officers of the duchy, defensive constructions, the Porte de la Citadelle gate and more, all incorporating the latest defensive innovations of the Renaissance. The most substantial addition was the one that got all of Europe talking about Nancy: the construction of the New Town beginning in 1588.



### 18TH CENTURY

Built by the architect Emmanuel Héré, Place Stanislas is a privileged place for Nancy locals and is known as one of the most beautiful royal

squares in the world. It was elected in 2021 «favorite monument in France». It was commissioned by Stanislaw, the last duke of Lorraine, to the architect Emmanuel Héré, a student of Boffrand. Its light paving stones, gilded gates and rococo fountains highlight the pure and classical architecture of the buildings. Along with Place d'Alliance, Place de la Carrière and the Arc Héré triumphal arch, Place Stanislas is a part of an ensemble included on the UNESCO World Heritage List.



### THE 1900S AND ART NOUVEAU

An alliance of the art world based on the ideal, "art in everything, art for everyone", French Art Nouveau was born in Nancy around 1880 from the minds of genius, rigorous, rounded and generous artists including Gallé, Prouvé (Victor), Majorelle and Daum. The Nancy School, "École de Nancy" will lead you to the Excelsior brasserie, the round swimming pool of Grand-Nancy-Thermal spa or the Saurupt district: a genuine catalogue of Art Nouveau and Art Deco architecture between 1880 and 1935.

## A GOURMET AND EPICUREAN TOWN

### NANCY BOASTS MORE THAN 20 SWEET SPECIALITIES

Macarons, bergamote, mirabelle plums, madeleines, Saint-Epvre, visitandine, gingerbread, babas, candies, red sugar, jams, chocolates and more. The NANCY PASSIONS SUCREES brand guarantees exceptional, artisanal products made right here on the territory respecting traditional methods and using excellent, quality products from verified sources. A visit to Nancy isn't complete without tasting one or several of our sweet specialities!



### THE LORRAINE BEER ROUTE

54 breweries and microbreweries, 17 historical sites and 3 museums including the French Brewing Museum in Saint-Nicolas-de-Port (15 km from Nancy) come together to make Nancy and its surrounding area a paradise for beer enthusiasts.

Not-to-be-missed events: The Brewers Trade Fair and Beer Festival take place every year at the Parc Expo of Nancy.

**21st and 22nd october le salon du Brasseur**

**22nd and 23rd october la Fête des Bières**

More info at [www.routelorrainedelabiere.com](http://www.routelorrainedelabiere.com)



## ARTS AND CRAFTS

Nancy is well known for its tradition of arts and crafts: glassworks, enamels, Earthenware, ironworks... **DESTINATION NANCY - Office de Tourisme** aims to become a referent tourist office in France to promote this tradition. A dedicated space has been laid out. We also offer you the possibility to meet craftsmen and see them creating.

## FUN, CAPTIVATING, AND ESSENTIAL: OUR 360° VIRTUAL TOURS

Since January 2021, you can get to know our destination with free 360° virtual tours provided by DESTINATION NANCY, the Tourist Office of Greater Nancy. Simply follow the link to start your visit on a computer, tablet, smartphone, or virtual reality headset. The tour begins on Place Stanislas, where you can choose from 50 virtual views of tourism sights, historical and natural sites of Greater Nancy.

Use these virtual tours to share the Nancy experience with your partners and customers. These visits can also help you perfect your tour or your holiday program in the capital of the Dukes of Lorraine. There are also hot spots to discover at each site (nearby points of interest such as shops, services, and partners).

[www.visitnancy360.com](http://www.visitnancy360.com)

# Vibrant Nancy

## ↻ 2022 highlights ↻

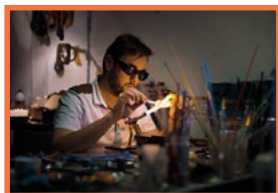
2022 has been declared by UNESCO as the « International Year of Glass ». Nancy is part of this project and will particularly promote its heritage though (religious stained glass, Art Nouveau and Art Deco glass creations...). Moreover there is also contemporary creation though an exhibition at the Fine Arts Museum of Nancy in the spring.

Please note: Visit our website for details and up-to-date information: [Nancy-tourisme.fr](https://nancy-tourisme.fr) (in 4 languages).



### SPRING

↻ 28th March - 3rd April



EUROPEAN ARTISTIC  
CRAFT DAYS

↻ 11th - 12th June

ART NOUVEAU WEEK-END



Special programme of events  
at the Ecole de Nancy Museum  
and the Villa Majorelle.

### SUMMER

↻ Mid-June -  
mid-September



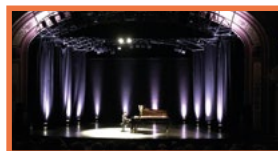
RENDEZ-VOUS PLACE  
STANISLAS

Enter a grandiose dream of  
light: a video mapping show  
on Place Stanislas.

↻ 21 June

NATIONAL MUSIC DAY

↻ July - August



NANCYPHONIES FESTIVAL

The leading classical music  
festival in the Grand Est  
region.

↻ Late August -  
early September

NANCY LORRAINE  
INTERNATIONAL  
FILM FESTIVAL

Discover a different type  
of cinema, open to new  
horizons and diversity.

### AUTUMN

↻ 9th - 11th September



LE LIVRE SUR LA PLACE

The first major book fair of  
the French literary season.



📅 17th - 18th Septembre  
**EUROPEAN HERITAGE DAYS**

📅 October



#### JARDIN ÉPHÉMÈRE

When nature dialogues with the remarkable heritage of Place Stanislas.

📅 1st - 15th October



#### NANCY JAZZ PULSATIONS

The most iconic music festival in the Grand Est region.

📅 21st - 23rd October

#### BREWER'S TRADE FAIR AND BEER FESTIVAL

Parc Expo Nancy

## WINTER

📅 Late November 2022 -  
 early January 2023



#### SAINT NICHOLAS FESTIVITIES IN NANCY

Parade through the town on 3 December, cultural and promotional events, music, illuminations, rides and the big wheel, the Saint Nicholas villages (Christmas markets) and more. Enjoy 40 days of festivities in Nancy, centred around the main weekend of **3rd and 4th December.**



#### IN 2023, THE GRAND NANCY THERMAL PROJECT

Wellness, fitness, relaxation and health are at the heart of the Grand Nancy Thermal Project. This modern spa and aquatic complex in the heart of Greater Nancy is slated to open in 2023. The establishment will be

open to everyone, offering a complete and wide range of amenities all on the same site. Visitors will be able to enjoy diverse activities and a variety of services: sports, recreation, wellness and health.

# Not-to-be-missed Nancy

## ↻ Tours and short breaks 2022 ↻



🕒 1.5 hr 🚶 🚼 🚫

### 1 • HISTORIC CITY CENTRE

This tour notably includes Place Stanislas and Place de la Carrière and allows the visitor to examine the lasting impression the last Duke of Lorraine made on the city. The charm of the Ville Vieille, with its medieval and Renaissance elements, is revealed thanks not only to its architectural gems, but also to its great shops, pretty terraces and little cafés. The Ducal Palace, the distinctive private mansions, the Porte de la Craffe Gate and Saint-Epvre Church are some important monuments from Lorraine's history included on the tour.

*Optional 30 min extra - Visit the inside of the Porte de la Craffe Gate - 18 people per group maximum.*



🕒 1.5 hr 🚶 🚼 🚫

### 2 • UNESCO WORLD HERITAGE

Nancy is famous around the world for its architectural ensemble which has been recognised as a UNESCO World Heritage site since 1983. You will discover Place Stanislas, as well as Place d'Alliance and Place de la Carrière.



Organisation  
des Nations Unies  
pour l'éducation,  
la science et la culture



Place Stanislas, de la Carrière  
et d'Alliance à Nancy  
inscrites sur la liste du patrimoine  
mondial en 1983



🕒 1.5 hr 🚶 🚼 🚫

### 3 • ART NOUVEAU

#### AT THE HEART OF BUSINESS

From the Tourist Office to the Excelsior brasserie, this tour explores the sites of Nancy's business world around the year 1900: shops, pharmacies, banks (in particular the glass ceiling of Crédit Lyonnais) and other buildings that reflect the artistic spirit of the town.

*Optional 30 min extra - Visit the inside of the Chamber of Commerce (stained-glass windows by Gruber), not available on weekends.*



🕒 1.5 hr 🚶 🚼 🚫

### 4 • ART NOUVEAU?

#### ART DÉCO?

While Nancy is world renowned for its status as France's Art Nouveau capital, it is lesser known for its Art Déco heritage, which includes several thousand buildings. This tour takes you to the ideal site to better understand the differences between these two styles: Nancy's Saurupt Park that was urbanised mainly during interwar period



🕒 1.5 hr 🚗 🦽 🦼

#### 5 • ART NOUVEAU HOMES BY BUS ON THE EDGE OF TOWN

From your coach, you will discover the most remarkable buildings of the Nancy School: Bergeret House, Saurupt Park (garden city composed of five more Art Nouveau villas) and Villa Majorelle.

*Optional 30 min extra - Visit of the interior of Bergeret House, not available on weekends*



🕒 1.5 hr 🦽 🦼

#### 6 • PRÉVILLE CEMETERY

Many of the tombs are designed in the Neo-Romanesque, Neo-Gothic, Neo-Moorish or Romano-Byzantine styles popular in the 19th century. Nancy was one of the birthplaces of the Art Nouveau style which features heavily at Prévillè Cemetery. As you wander among the rows of graves, you will be struck by the many epitaphs, the range of shapes and materials, and the light reflecting off the stone and stained glass.



🕒 1.5 hr 🦽 🦼

#### 7 • ART NOUVEAU HOMES ON FOOT

From the city centre to the neighbourhoods to the west of the town, the walk leads to Villa Majorelle and/or the Ecole de Nancy Museum. You'll discover how the city slowly expanded, taking over agricultural lands and former surrounding towns schrittweise Ausbreitung der Stadt auf landwirtschaftliche Flächen und alte Marktflecken.



🕒 1.5 hr 🦽 🦼

#### 8 • STREET ART

Street art created by international and local artists (including Lorraine natives) stretches from Ville Vieille to Place des Vosges and from Place Simone Veil to Porte Sainte-Catherine. These contemporary works create paths through space and time. This urban heritage, to which stunning works are continually added, opens up new perspectives and narratives.

Other thematic visits are available: Nancy's botanical traditions, animals in the city, Nancy's street names, the Grand Salons of Nancy's city hall, Art Nouveau pharmacies, 18th-century churches, exclusive tour of the covered market, memorial trail: the 1943 Nancy raid and more.

## ➡ Guided tours prices ⬅

Prices are valid from 01/01/2022 to 31/12/2022  
Our rates remain unchanged (same as 2021).

### IN FRENCH

DURATION	WEEKDAYS & SATURDAYS	SUNDAYS	BANK HOLIDAYS & AFTER 9 P.M.
1 hr 30 min	€109	€139	€199
2 hr	€119	€169	€229
3 hr	€189	€279	€369
4 hr	€239	€299	€419
Additional hours	€49	€69	€89
Daily rate	€400	€600	€800

### IN OTHER LANGUAGES

DURATION	WEEKDAYS & SATURDAYS	SUNDAYS	BANK HOLIDAYS & AFTER 9 P.M.
1 hr 30 min	€119	€169	€229
2 hr	€139	€209	€279
3 hr	€229	€339	€449
4 hr	€299	€439	€589
Additional hours	€69	€99	€129
Daily rate	€500	€700	€900



## AUDIOPHONES

Audiophones are available for hire with one headset per person. A convenient and comfortable way to listen to the guide's comments.

- Up to 2 hours €39
- Over two hours: free or 10% off the price of the guided tour.

## PRICES AND TOUR INFORMATION 2022

We offer tours in French, English, German, Japanese, Italian, Polish, Chinese and Russian. The prices correspond to the cost of providing a guide (they do not include the admission fees to museums and sites which charge for entry) for:

- The guided tours
- the museum tours

These prices do not apply to certain museums which have their own guides: Schott House, Fléville Château, Montaigu Château, La Douëra, Museum-Aquarium, Iron History Museum and the Botanical Gardens Jean-Marie Pelt (more information on request)

### Walking tours and museum tours:

1 guide for 25 people. For groups with more participants, book a second guide or hire audiophones. Audiophones are mandatory for groups of 25 to 34 people maximum.

### Bank holidays 2022:

Saturday 1st January, Monday 18th April, Sundays 1st and 8th Mai, Thursday 26th Mai, Monday 6th June, Thursday 14th July, Monday 15th August, Tuesday 1st November, Friday 11th November and Sunday 25th Décembre.



## OUR SHOP

Alongside tourist information, maps, and brochures, you'll find the perfect souvenir or gift:

- For yourself, as you discover the region and look for that little souvenir that won't weigh down your suitcase
- For your friends or family, to bring back "a little something" from your holiday in Nancy
- To mark the occasion and treat yourself to the object of your dreams

The Shop offers a wide and varied selection for all budgets, with top-notch assistance. Here, you'll find traditional local products, gourmet products with the Nancy Passions Sucrées label, books, a selection of regional textiles, as well as one-of-a-kind, unique items (including jewellery) made by our local artisans.

Open every day of the year, except 25 December, 1 January, and Sundays in January, February and March.

# Not-to-be-missed Nancy

## Alternative Nancy

### RALLIES

🕒 2,5 hr 🍷 🦿 From €13 pp

Based on 20 people minimum (for fewer participants, a flat rate of €260 applies) \*

#### Your choice of 3 themes:

- Historic city centre
- Art Nouveau
- Gourmet (See the page Epicurean Nancy)

Experience this walking tour competition as a family, with friends or with colleagues. The rally is designed to help you discover the history of the ducal city and its anecdotes. Each itinerary is dotted with explanations and questions about the town, its history and its famous residents. The goal of each team is to answer the questions and get the most points! Prizes are awarded to the winners.

*\*Sundays and foreign languages (English and German) for an additional fee.*



### TOURIST TRAIN

🕒 45 min.

Discovery tour of the historic centre on a tourist train: explore the 18th-century architectural ensemble and the old town Ville Vieille.

- 1 departure every hour, on the hour, except at 1 p.m.
- April: 11 a.m. - 5 p.m., from May to September 10 a.m. - 6 p.m., October: 11 a.m. - 5 p.m.
- Recorded commentary in 10 foreign languages

• [www.petit-train-nancy.fr](http://www.petit-train-nancy.fr)

Tel.: +33 (0)3 89 73 74 24

Email: [info@petit-train.com](mailto:info@petit-train.com)

*So you know: the tourist train went electric in 2022*





## Nancy in small groups

### FOR SMALL GROUPS OF UP TO TEN PEOPLE OPT FOR THE MINI GROUPS PASS

*Economical, practical, paperless*

With the 1-, 2-, or 3-day City Pass, you'll get

- Free and unlimited access to the museums and public sites of Greater Nancy.
- A free guided tour\*\* and a free audio tour of the city.
- Access to the entire STAN transportation network (bus and tram). Contact the tourist office to get your discount code for the MyBus app.
- Special offers and discounts for lots of shops, restaurants, and activities, including the Shop at the Tourist Office.

**Rates for 10 people (fixed price, cannot be divided)**

• 24 hr pass: €140

• 48 hr pass: €220

• 72 hr pass: €290

Free for children under 12 (not including transportation)

## NEW

Before your visit to Nancy, or if you can't make the trip, discover our virtual tours with 360° visits: NancyVisit360 and guided conference tours on plenty of themes related to our destination. Don't hesitate to contact us, we will adapt to your needs!

# Nancy for young visitors

## GUIDED TOURS



🕒 1 hr to 90 min 🧑🧒 ♿

€119 per group (max. 25 pupils)

### DISCOVERING THE HISTORIC CITY CENTRE

#### Ages 8 to 17

*Available Monday to Saturday  
(except public holidays)*

The tour includes Place Stanislas and Place de la Carrière. It addresses the rich personality of the last Duke of Lorraine through his different accomplishments. The tour of the Ville Vieille, with its medieval and Renaissance elements, passes by some of Lorraine's major historical sites, with particular attention to the countless details carved into stone or wood: figures, animals, decorative patterns, etc.



🕒 1 hr to 90 min 🧑🧒 ♿

€119 per group (max. 25 pupils)

### DISCOVERING ART NOUVEAU

#### Ages 8 to 17

*Available Monday to Saturday  
(except public holidays)*

From Place Maginot to Place Stanislas, this tour explores the sites that made up the business world around the year 1900: shops, banks and other buildings. We'll observe details illustrating the entrepreneurial spirit of the bourgeoisie of business from the time period by examining buildings from different angles: technology, structure, decorations, symbols, etc.



🕒 1 hr to 90 min 🧑🧒 ♿

€119 per group (max. 20 pupils)

### ANIMALS IN THE CITY

#### Ages 3 to 8

*Available Monday to Saturday  
(except public holidays)*

Dog or cat? Pigeon or sparrow? The visit takes a careful and documented look at the fabulous stone bestiary that decorates our façades.



🕒 1 hr to 90 min 🧑🧒 ♿

€119 per group (max. 20 pupils)

### AROUND PLACE STANISLAS

#### Ages 3 to 8

*Available Monday to Saturday  
(except public holidays)*

Just who was Stanislaw, the former king of Poland and the last Duke of Lorraine? What were his reasons for building this beautiful royal square in Nancy? We'll point out and explain the numerous symbols that make up its decor.



## RALLIES

French, German or English-speaking guides (depending on the rally) assist with a few key moments: introduction and presentation, additional explanations at some points along the itinerary, correcting the sheets and awarding prizes. They do not, however, ensure the supervision of the group. Commentary is adapted to the age of the students.



🕒 2 hr 🚶 🦽

€130 per group • max. 30 pupils

### HISTORIC CITY CENTRE RALLY

#### Ages 8 to 16

*The itinerary is tailored to the age of the participants. From Monday to Saturday (except public holidays).*

Explore Place Stanislas and the Ville Vieille in the company of your guide on a walking tour competition packed with questions and explanations.



🕒 2 hr 🚶 🦽

€130 per group • max. 30 pupils

### ART NOUVEAU RALLY

#### Ages 8 to 16

*The itinerary is tailored to the age of the participants. From Monday to Saturday (except public holidays).*

A city-centre walking tour competition led by a guide to introduce your group to Art Nouveau architecture.



🕒 2 hr 🚶 🦽

€250 for 1 French-speaking group and 1 German- or English-speaking group

### FRANCO-GERMAN OR FRANCO-ENGLISH RALLY

#### Ages 12 to 16

*The itinerary is tailored to the age of the participants. From Monday to Saturday (except public holidays)*

Pupils will follow this walking tour competition around historic Nancy in bilingual groups, offering them a fantastic opportunity to communicate with their foreign-language peers as they explore. The rally is led by two guides.

## Epicurean Nancy: Gourmet tourism

### GUIDED TOURS



🕒 1.5 hr 🍷 ♿ 🚫

**From €26 pp  
(15 to 25 people)\***

#### GASTRONOMIC VISIT

Combine a heritage discovery with a gourmet tasting. Tour one of Nancy's neighbourhoods (Ville Vieille, UNESCO heritage or an Art Nouveau district) and then enjoy a tasting of a regional speciality with one of our partners.



🕒 1.5 hr 🍷 ♿ 🚫

**From €13 pp  
(15 to 25 people)\***

#### ART NOUVEAU DELIGHTS

An afternoon snack at the Excelsior brasserie (Nancy's Art Nouveau brasserie) including a hot drink, juice and a snack of your choice. The tour can be in the company of a guide who will talk about Art Nouveau and explain the exceptional decor of the site.



🕒 1.5 hr 🍷 ♿ 🚫

**€6 pp • €12 pp  
+ 1 dozen macaroons  
(20 to 60 people) \***

#### BATT CHOCOLATS

Demonstrations and tastings. Discover how Lorraine's star products and Batt's own specialities are made, step by step. Favourites include Nancy Macarons, Bergamotes de Nancy (PGI), marzipan-covered mirabelle plums, Lorraine Chardons and Marquises.

Various chocolate figures are also produced at key times of year (Christmas, Easter, Valentine's Day, etc.).

[www.alainbatt.com](http://www.alainbatt.com)

Tel.: +33 (0) 83 35 70 00



🕒 2.5 to 3 hr 🍷 ♿ 🚫

From €19 pp (15 to 25 people) \*

#### GOURMET RALLY

Visit Place Stanislas while tasting a bergamot candy. Admire an Art Nouveau façade while savouring a macaroon. On this walking tour competition, you'll discover some of Nancy's divine and exquisite specialities.



🕒 1.5 hr 🍷 ♿ 🚫

From €49 pp (not including transportation)

#### GOURMET LORRAINE

**Cook your own quiche lorraine!**

##### Morning

"Historic city centre" tour (see p. 10) then set off for the Auberge de la Mirabelle "Chez Léon" in Ferrières (44 km from Nancy) for a quiche Lorraine cooking class.

Lunch with a tasting of quiche lorraine.

##### Afternoon

Guided tour of the Mirabelle Centre in Rozelieures with tastings of specialities made from mirabelle plums.

\* Sundays and foreign languages available for an additional fee



# Cultural Nancy:

## Museums in Greater Nancy



🕒 1.5 hr ♿

€4.50 pp (excluding guide)

### FINE ARTS MUSEUM

*Closed on Tuesdays*

Next to paintings signed by Tintoret, Caravage, Rubens, Delacroix, Monet, Modigliani and Picasso, works by a number of artists from Lorraine are on display: Claude le Lorrain, Émile Friant, Victor Prouvé, Étienne Cournault and Jules Bastien-Lepage. The Daum collection of glassworks allows the visitor to discover 100 years of production of the celebrated Nancy manufacturer. A permanent exhibition space is also dedicated to the work of Jean Prouvé



### CORDELIERS CHURCH / MUSEUM OF LORRAINE - PALACE OF THE DUKES OF LORRAINE

*Closed on Mondays*

During the construction to expand the Museum of Lorraine, Cordeliers Church (as well as its adjoining chapel) remain open with free entry. This major historical site of the Duchy of Lorraine is known as the "Saint-Denis" of Lorraine, as it is the final resting place for the dukes of Lorraine, with their tombs under a cupola inspired by the dome of Medici Chapel in Florence. The tomb niche of King René II is also presented here with a remarkable group of statues including the recumbent statue of Philippa of Guelders by Ligier Richier.



### GALERIE POIREL

*Open Tuesday to Sunday, 2 p.m. to 6 p.m.*

The Galerie Poirel is entirely dedicated to contemporary art and design. Its façade and square, dating to 1880, are the backdrop for the permanent work entitled "Traits d'union" by designer Robert Stadler that creates a dialogue between contemporary art, design and heritage.



🕒 1.5 hr

€4 pp (excluding guide)

### ÉCOLE DE NANCY MUSEUM

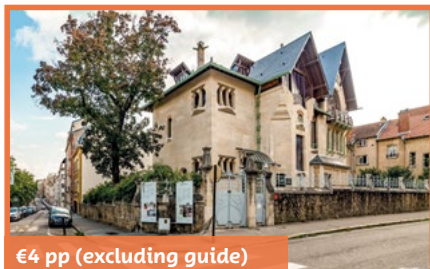
*Closed on Mondays and Tuesdays*

Situated on the property of Eugène Corbin, patron of the Nancy School, the museum and its gardens recreate the decorative and botanical styles of the era. The collections (unique pieces from Émile Gallé, Eugène Vallin and Louis Majorelle) are a testament to the diversity of techniques developed by the artists of this movement (furniture, glass objets d'art, stained-glass, leather, ceramics, textiles and more).



## GUIDES OF THE TOURIST OFFICE

The guides of the Tourist Office can accompany you to the Beaux-Arts Museum (excluding the Galerie Poirer), the École de Nancy Museum and the Jean-Marie Pelt Botanical Garden.



€4 pp (excluding guide)

### VILLA MAJORELLE

*Closed on Mondays and Tuesdays, for groups morning visits only.*

A work of the architect Henri Sauvage, this magnificent home was built for the artist and furniture designer Louis Majorelle and his family. Just a few hundred metres from the famous "École de Nancy" Museum, the only museum in Europe entirely dedicated to decorative arts from the Art Nouveau period, it is a perfect complementary visit to the museum, shedding more light on the incredible creativity of the era.



1.5 hr

€3.10 pp (excluding guide)

### MUSEUM-AQUARIUM OF NANCY

*Closed on Mondays*

Nancy's Museum Aquarium boasts numerous aquatic species in tropical aquariums and a stuffed animal area representing global diversity. Original and educational temporary exhibitions on diverse themes are regularly scheduled.

Tel.: +33 (0)3 83 32 99 97

departement-public-MAN@grand-nancy.org

### TOP TIP

Museum admission is free on the first Sunday of the month and all year round for students and everyone age 25 and under.



1.5 hr

€3.10 pp (excluding guide)

### JEAN-MARIE PELT BOTANICAL GARDENS

*No weekly closure*

This 35-hectare park comprises over 12,000 plants: from common plants you would find in your back garden to exotic species originating from the most faraway lands (Alpine garden, tree garden, rose garden, medicinal plant garden, etc.). In the tropical greenhouses which span 2,500 m<sup>2</sup>, observe carnivorous plants, giant Amazonian water lilies and threatened palms

Tel.: +33 (0)3 83 41 47 47

pedagogiecbn@grand-nancy.org



2 hr

€3.10 pp (excluding guide)

### IRON HISTORY MUSEUM

*Closed on Tuesdays*

With an architecture of glass and steel, the museum demonstrates the evolution of the techniques and the diverse uses of iron. On the main floor, the museum displays 300 m<sup>2</sup> of models, sketches, plans, designs and pieces of furniture of the artist Jean Prouvé. In the "construction garden" several of his structures are made to scale

Tel: +33 (0)3 54 50 21 81

public-mhf@grandnancy.eu

## Greater Nancy area

**Greater Nancy encompasses 20 towns with various atmospheres, histories and features. From Sainte-Geneviève hill to the north, to the great Bosserville Charterhouse in the south, including the castles of Villers and Vandœuvre, the vineyards of Dommartemont and the green islands of Tomblaine, the towns are brimming with architectural and natural treasures.**

**On the edge of the forest (the Haye Forest is the 2nd largest peri-urban forest in France), there are hundreds of kilometres of greenways and trails (both wild and maintained) for walking, studying nature, leisure activities or sports.**

**A selection of a few sites to discover:**



🕒 90 minutes • 30 people maximum

**NOTRE-DAME DE BONSECOURS CHURCH**

### Nancy

*Closed to visits during services*

Constructed from 1738 to 1741 and the first creation of Emmanuel Héré, Stanislaw's architect, this church was built on a sanctuary dedicated to the Virgin Mary. Devotion to Mary is very present in Polish piety, leading Stanislaw to choose the church for his tomb and for that of his wife as well.



🕒 90 minutes • 30 people maximum

**LA DOUËRA**

### Malzéville

Meaning "little house" in Arabic, this stunning and extravagant Moorish dwelling from the late 19th century is a little Arabian palace on the edge of the Meurthe River. The eastern façade of the building is registered on the historical monument inventory, as are three of its rooms: the Persian lounge on the 1st floor, the Atelier and the Diwan on the 2nd floor.

Tel.: +33 (0)3 83 29 43 78 /+33 (0)3 83 29 92 30



🕒 1 hr • 20 to  
40 people max.

#### FLÉVILLE CHÂTEAU

##### Fléville-devant-Nancy

*Open from April to November for groups and schoolchildren by prior booking at least 15 days in advance.*

Just near Nancy, Fléville Château invites visitors on a journey back in time with its feudal dungeon and Renaissance façade. This lovely building is also a family residence; the same family has lived here for more than two centuries, giving the dwelling a warm and lively atmosphere. Surrounding the castle is a large, romantic park, with the Remarkable Gardens label as well as an 18th-century orange grove.

Tel.: +33 (0)3 83 25 64 71 • mc.delambel@gmail.com



🕒 1 hr • 20 people max.

#### MONTAIGU CASTLE AND ITS PARK

##### Laneuveville-devant-Nancy and Jarville-la-Malgrange

*Open for guided tours only with prior booking at the Iron History Museum.*

The former home of the collector Edouard Salin (1889-1970), this lovely manor house features collections that testify to the tastes of an enlightened enthusiast: objets d'art, 18th- to early 20th-century furniture, decorative arts and archaeology. The park is filled with plant varieties typical of 19th-century gardens and is open to all. The Iron History Museum is on the castle grounds.

Tel.: +33 (0)3 54 50 21 81  
public-mhf@grandnancy.eu



🕒 90 min. to 2 hr  
20 people max.

#### BOSSERVILLE CHARTERHOUSE

##### Art-sur-Meurthe

*Visits available by prior booking only.*

One of the region's most beautiful 17th-century buildings is a precise and moving evocation of the daily lives of Carthusian monks. Its stones come from Nancy's fortifications that had recently been dismantled by Louis XIV. The beautiful classical façade reflects the waters of the Meurthe River.



🕒 90 min.  
20 people max.

#### CHÂTEAU OF MADAME DE GRAFFIGNY

##### Villers-les-Nancy

*Visits available by prior booking only.*

In the heart of the old village, this 18th-century dwelling was refurbished in 1865. The mezzanine floor houses an art gallery. The garden boasts remarkable trees including Lebanon cedars planted by Mathieu de Dombasle in the 19th century.



# Not-to-be-missed Nancy

## ↔ Our holiday ideas ↔

The incoming groups service assists you with planning an outing or a holiday, for component activities or an all-included package (meals, transportation, accommodation, shows, etc.).



From €49 pp

### ESSENTIAL NANCY

Discover the not-to-be-missed sites

#### 1/2 day

Morning or afternoon: tour of your choice and museum of your choice (see p. 20). + lunch.  
From €49 pp.

#### Full day

2nd ½ day: tour and museum of your choice (see p. 20).  
From €69 pp..



From €139 pp

### NANCY ART NOUVEAU (2 DAYS / 1 NIGHT)

Experience the Belle Epoque

#### Day 1

- Afternoon: "Art Nouveau at the heart of business" tour (see p. 10), and visit of the Daum collection at the Fine Arts Museum (see p. 20).
- Dinner at the hotel.
- Overnight in a 3-star hotel .

#### Day 2

- Morning: "Art Nouveau on the edge of town" tour (see p. 11) and visit of the Ecole de Nancy Museum (see p. 20).
- Lunch.



From €39 pp

### NANCY DESTINATION DE JARDINS

Breathe in the fragrances of days gone by

#### Morning

- "Historic city centre" tour (see p. 10) including Pepinière Park and the Godron Garden.
- Lunch.

#### Afternoon

Guided tour of the Jean-Marie Pelt Botanical Gardens (see p. 21) including the tropical greenhouses

*Our prices, based on 20 people minimum, include: the guided tours and entry to the museums, the meal or meals mentioned excluding drinks, 1 overnight stay (where applicable) in a double room in a hotel (with breakfast), free for the driver. Drinks and transportation are not included. Tourist tax to be paid directly to the hotel on arrival. Additional fees for single rooms and guided tours on Sundays, public holidays and in languages other than French. Schedules are flexible according to opening days and times of the sites and museums*





## Entertaining Nancy

### ➡ Nancy in summer ⬅



**From €109 per person**

#### **NANCY IN SUMMER**

(2 days / 1 night)

Available from mid-June to mid-September.

Every evening, the Rendez-vous Place Stanislas show illuminates one of the most beautiful squares in the world (duration: 25 minutes). The Nancyphonies festival (July and August) is the chance to attend one of the classical music concerts on the programme (see p.8).

- Dinner
- Evening: Historic city center tour (see p. 10), followed by the sound and light show Rendez-Vous Place Stanislas.
- Overnight accommodation in a three-star hotel with breakfast.



#### **Optional, from €129 per person**

- A concert during the Nancyphonies festival (see programme) including a tour of city hall's Grands Salons.

*Our prices, based on 20 people minimum, include: the guided tours and entry to the museums, the meal or meals mentioned excluding drinks, 1 overnight stay (where applicable) in Greater Nancy in a double room in a 3-star hotel (with breakfast), free for the driver (minimum of 20 paying participants). Drinks and transportation are not included. Tourist tax to be paid directly to the hotel on arrival. Additional fees for single rooms and guided tours on Sundays, public holidays, and in languages other than French. Schedules are flexible according to opening days and times of the sites and museums.*



## Experience the Saint-Nicholas Festivities in Nancy



**Combining traditions and contemporary creations, Lorraine's biggest celebration brings tens of thousands of people to Nancy every year! 40 days of activities, illuminations, Saint-Nicholas villages (Christmas markets), gourmet chalets, crafts, activities for kids and more. The town celebrates patron saint of Lorraine as well as the values of togetherness and conviviality. Every year, a different country is the guest of honour.**

**THE HIGHLIGHT OF THE FESTIVITIES IS THE PARADE THROUGH THE STREETS OF THE CITY CENTRE. IN 2022, IT'S ON SATURDAY 3 DECEMBER!**

**From €149 pp**

**SAINT-NICHOLAS WEEKEND, 3 AND 4 DECEMBER 2022**

### Day 1

Afternoon:

- "Historic city centre" tour (see p. 10)
- Free time after the visit to discover the Saint-Nicholas villages (Christmas market) and city centre happenings: music, theatre and dance
- At the end of the day: parade of floats and a video projection on Place Stanislas
- Dinner at the hotel
- Overnight accommodation in a three-star hotel

### Day 2

Morning:

- Visit of a museum of your choice (see p. 20)
- Lunch
- Free time after the visit to discover the Saint-Nicholas villages (Christmas market) and city centre happenings: music, theatre, dance.



**From € 139 pp**

**WEEKEND IN DECEMBER (EXCLUDING SAINT-NICHOLAS WEEKEND)**

### Day 1 (Saturday)

Afternoon:

- "Historic city centre" tour (see p. 10)
- Free time after the visit to enjoy the Saint-Nicholas villages, the big wheel and other entertainment (see the programme)
- Dinner at the hotel
- Overnight accommodation in a three-star hotel

### Day 2 (Sunday)

Morning:

- "Art Nouveau on the edge of town" tour (see p. 11) and visit of the Ecole de Nancy Museum (see p. 20)
- Lunch
- Free time to discover the events throughout the city (see the programme)

*PLEASE NOTE: at the time of publication, the exact times of the events and shows are not available. The programme and dinner times are thus subject to change.*

*Our prices, based on 20 people minimum, include: the guided tours and entry to the museums, the meal or meals mentioned excluding drinks, 1 overnight stay (where applicable) in a double room in a hotel (with breakfast), free for the driver. Drinks and transportation are not included. Tourist tax to be paid directly to the hotel on arrival. Additional fees for single rooms and guided tours on Sundays, public holidays and in languages other than French. Schedules are flexible according to opening days and times of the sites and museums.*



# Lorraine

## ➡ Industrial tourism ➡

With its subsoil rich in iron and salt, the region has retained remarkable vestiges of its mining history. Today, Lorraine still produces salt, a precious mineral used for cooking, de-icing and chemical industries. Salt, soil and subsoil: a whole world to discover! Prices on request .



### SALT

*Places of interest open to groups*

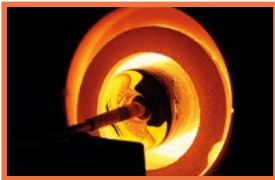
- **Varangéville salt mine** (20 km): visit France's last working salt mine.
- **Dieuze Royal Salt Works** (45 km): a salt works operated since the Middle Ages.
- **Haraucourt Salt Museum and Observatory** (19 km): a unique site where visitors can learn all about Lorraine's salt industry from the 19th century through to the present day.



### IRON

*Places of interest open to groups*

- **Jarville Iron History Museum** less than 5 km from Nancy.
- **Neuves-Maisons Val de Fer Mine** (17 km): visit to an iron ore mine, with a look at the miners' working conditions.
- **Themed guided tour entitled "From Jean Lamour to Jean Prouvé"** in Nancy: a tour of the city centre looking at the major names from the history of Nancy's wrought-iron craft.



### GLASS

*Places of interest open to groups*

- **Company of Glass-Blowers (CERFAV) at Vannes-le-Châtel** (40 km): tour of the site and glass-blowing demonstration.
- **Baccarat Crystal Museum** (60 km): a museum dedicated to the history of the famous crystal, known worldwide for its outstanding quality.
- **Themed guided tour of the Daum Collection in Nancy:** this tour tells the story of the Daum glassworks from its creation to the present day.



### WOOD

*Places of interest open to groups*

- **Compagnons des Walser at Mazerulles** (20 km): creation and restoration of wooden furniture.
- **Visit to a sawmill at Saint-Dié-des-Vosges** (90 km): learn about woodworking.
- **Visit to a chair and furniture manufacturer at Neufchâteau** (60 km): discover very specialised skills and watch a demonstration.



# Destination Lorraine



**Over the entire territory, our incoming groups service can draw up half-day, full-day or multi-day tours for your group. Call us for a costed proposal adapted to your needs.**

## METZ

Discover Metz along diverse thematic itineraries including:

- **"Metz City":** from Saint-Etienne Cathedral to the Citadelle district, from the Imperial quarter to the Amphitheatre district, the town is brimming with witnesses of its glorious past.
- **"Imperial District":** an exceptional urban ensemble with a variety of influences in the typical, contrasted style of the early 20th century.
- **Visit Nancy and Metz** from 149€/pers. including a visit in each town, one night and 2 meals.



## LUNÉVILLE

**A guided tour of Lunéville Château and its gardens**

is a window into the 18th century and the castle's Enlightenment heritage. You'll discover the exterior of the buildings and the restored rooms.

**Optional:** guided tour of Saint-Jacques Church in Lunéville.



## TOUL

Combine a visit of **the cathedral of Toul with a winery tour and tasting of Gris de Toul wine**. Follow it up with a visit of Saint-Etienne Cathedral, a symbol of Toul's rich episcopal past.

**Optional:** Visit of Sion-Vaudémont hill.



## PONT-À-MOUSSON

Discover the paper museum and continue your day with a visit to the brewery of Les Brasseurs de Lorraine in Pont-à-Mousson.

- **Au fil du Papier Museum:** the only museum in France with a substantial collection of lacquered papier-mâché.
- **Les Brasseurs de Lorraine:** the visit of Lorraine's largest craft brewery focuses on the production process and finishes with a tasting.

**Optional:** guided tour of Prémontrés Abbey.



## SAINT-NICOLAS-DE-PORT

Admire **Saint Nicolas Basilica in Saint-Nicolas-de-Port:**

a 16th-century basilica, a Gothic jewel and a major pilgrimage site in Lorraine.

**Optional:** visit of the national stud farm in Rosières-aux-Salines, visit of the French Brewing Museum in Saint-Nicolas-de-Port.

# MAP OF

## THE REGION



### LIVERDUN

Medieval village, panoramic view over the Moselle River, madeleines

**Distance: 19 km**



### NEUVES-MAISONS

The Val de Fer mine (guided tour by former miners)

**Distance: 17 km**

To Paris



### THE VIN GRIS AND MIRABELLE ROUTE

Wineries and wine tasting



### TOUL

Saint-Etienne Cathedral and cloister (12th-16th century), Collegiate church of Saint-Gengoult (14th-15th centuries)

**Distance: 23 km**



### THOREY-LYAUTEY

Marshal Lyautey's 19th-century chateau

**Distance: 39 km**



### SION-VAUDÉMONT

Sion Hill and basilica, the medieval village of Vaudémont and the Hill of 'stars' (fossils), stunning panoramic views.

**Distance: 37 km**



VERDUN

PONT-À-MOUSSON

FROUARD

LIVERDUN

NEUVES-MAISONS

VILLEY-LE-SEC

TOUL

VANNES-LE-CHÂTEL

DOMRÉMY-LA-PUCELLE

GRAND

THOREY-LYAUTEY

VÉZELISE

ROSIÈRE-A

FER

HAROU

NEUFCHÂTEAU

SION-VAUDÉMONT



### HAROUÉ

Family home of the princes of Beauvau-Craon, a remarkable 18th-century chateau with formal French and English landscaped gardens

**Distance: 29 km**

To Metz  
(55 km)



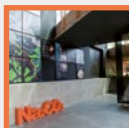
#### PONT-A-MOUSSON

Renaissance town centre and  
18th-century Prémontrés Abbey  
**Distance: 30 km**



#### SAINT-NICOLAS-DE-PORT

16th-century basilica where the relics  
of the patron saint of Lorraine are  
preserved, traditional procession in  
December, Brewing Museum.  
**Distance: 13 km**



#### HARAUCOURT

Salt museum  
**Distance: 19 km**



#### LUNÉVILLE

Château of the Enlightenment (17th-  
18th-centuries), French gardens, the  
'Versailles of Lorraine'  
**Distance: 35 km**

NANCY

HARAUCOURT

SAINT-NICOLAS-DE-PORT

UX-SALINES

RIÈRES

OUÉ

ROZELIEURES

GERBÉVILLERS

BACCARAT

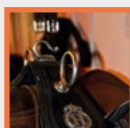
To Strasbourg

To Dijon



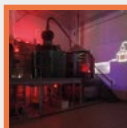
#### BACCARAT

World famous crystal, the crystal  
glassware workshop and museum  
**Distance: 60 km**



#### ROSIÈRES-AUX-SALINES

Stud farm dating from  
the 18th-century and fine  
Renaissance buildings  
**Distance: 23 km**



#### ROZELIEURES

Maison de la Mirabelle (Mirabelle  
museum, tasting and shop)  
**Distance: 44 km**

#### FOR RESERVATIONS, PLEASE CONTACT US

Tel.: +33 (0)3 83 35 90 02

E-mail: [reservations@destination-nancy.com](mailto:reservations@destination-nancy.com)

## Useful information

### ➡ Our incoming groups service is at your disposal

- Book guided tours
- Purchase packaged holidays
- Tailor-made programmes
- Personalised programmes in and around Nancy
- Quotes within a maximum of 72 hours
- Communication in French, in English or in German
- A single contact person for personalised service
- Tourisme & Handicap label guaranteeing an adapted welcome

### ➡ MORE INFORMATION ON

**[www.nancy-tourisme.fr](http://www.nancy-tourisme.fr)** > Groups Section

### ➡ COVID 19 - YOUR SAFETY IS OUR PRIORITY

- Limited number of visitors
- One-way flow / Entrance on Place Stanislas and exit on Rue des Dominicains
- Masks are mandatory for everyone
- Hand sanitiser available at the entrance and throughout the Tourist Office
- Shop area and information kiosks disinfected after each use by employees.



### **DESTINATION NANCY • Tourist Office of Greater Nancy**

INCOMING GROUPS SERVICE: Tel.: +33 (0)3 83 35 90 02

[reservations@destination-nancy.com](mailto:reservations@destination-nancy.com)

Opening hours of our service:

All year round (except on bank holidays)

Mondays : from 1pm to 5.30 pm

Tuesdays to Sundays : 9.30 pm to 1pm and from 2pm to 5pm.

Hotline on weekends and bank holidays if needed

Reception service: +33 (0)3 83 35 80 10.

**[www.nancy-tourisme.fr](http://www.nancy-tourisme.fr)**

AVANCE Nancy - 03 83 35 87 44 - Photo credits: Régine DATIN, Jean-François ADAM, Gregory FLUSIN, Karim AIDI, Nicolas GENOT, Bertrand JAMOT, Carole MARCANTONIO, Philippe CARON, Ville de Nancy, Julie FORT, François RECEVEUR, Nicolas DOHR, Paul ARNO, Philippe MASSILLT, C. COLLOT, C. VOEGELE, Lucie LORET, Ville de Saint Dié, OTOV, Anne Dénians / Chabanne + Partenaires. Mars 2022 • Document published by DESTINATION NANCY - photos are non-contractual.